

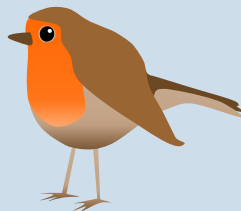
Beacon Park's Winter Poem Tree Trail for kids...



Spot the robins!

We think of them most in winter,
but they are here all year round.
Feasting on seeds, fruits and bugs,
and nesting near the ground.

The robin in our trail today has been a busy bird,
He's found out about the trees nearby,
And wants to share what he's heard...



What to do:

Read the poem and use the map,
To spot him in the trees.
I wonder who will spot him first?
But mind your step, do please!



Missing tags?

● We've put an eco-paint 'splodge' on each tree with a tag so, even if the tag is unfortunately missing at the time you visit, you'll know you found the right tree.

If you find a missing tag, and are able to do so, please report to:

parcs@lichfielddc.gov.uk or 01543 308867.

Thank you.

Be safe!

- ✓ mind your step
- ✓ be especially careful near the water
- ✓ be mindful of other park users
- ✗ do not follow the trail in dangerous weather e.g. strong winds, ice, heavy rain and snow.



The **alder** tree keeps its cones
all throughout the winter.



And alder wood makes good clogs,
let's hope it doesn't splinter!



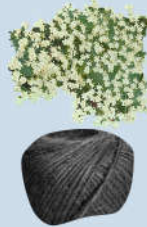
The **cherry** has a famous berry,
and magnificent blossom in spring(s).



Nowadays we use the wood for furniture -
it used to be used for barrel rings!



The **elder** has beautiful flowers,
which can be turned into a drink.



The bark* can be made into a black dye,
And the berries can be turned into ink!*

*raw elderberries and elder bark are toxic - do not eat



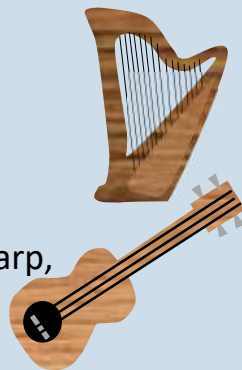
Birch wood is used for furniture and toys,
and its twigs make an excellent broom.



Also known as the Lady of the Woods,
Her bark shines bright within the gloom.



Robin is in a **maple** tree,
its bark is brown and flaky.



It can be used to make a harp,
and even an 'ukulele!



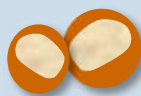
This **lime** has no citrus fruits,
its flowers are good for bees.



And as its wood does not warp,
it's great for piano keys!



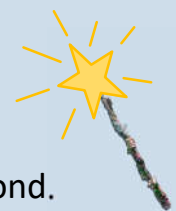
Horse chestnut trees give us conkers -
a fun game to play with friends.



But take care near their buds in winter,
the stickiness can be hard to cleanse!



Hazel trees grow lots of nuts,
of which squirrels are rather fond.



And many think hazel quite magical,
so a popular choice for a wand!



A **sycamore** tree is a common sight,
and its wood is easy to whittle.



You may see it as a Lovespoon,
a ladle or even a skittle!



Willow is a fast growing tree,
and can be made into many a thing.

Often used for weaving,
and making bats, whistles and string!

