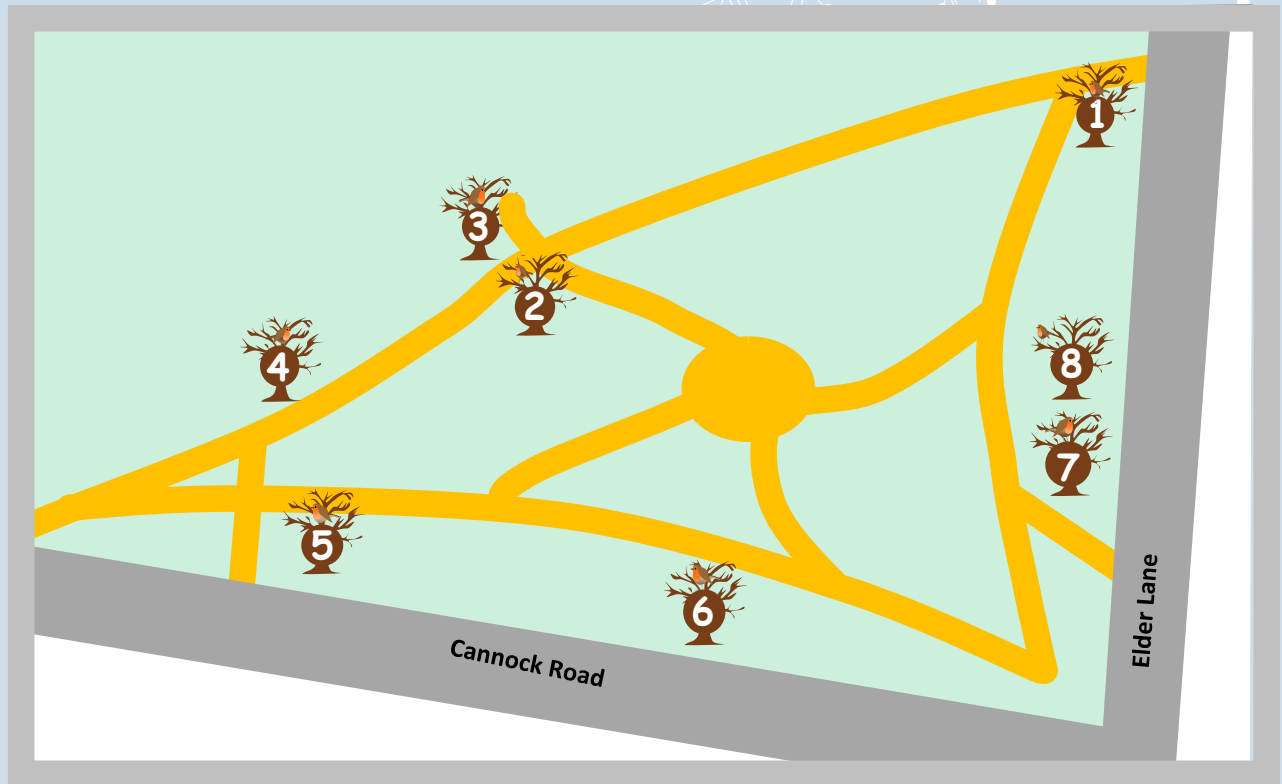


# Burntwood Park's Winter Poem Tree Trail for kids...

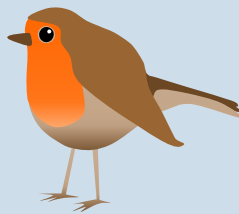


## Spot the robins!

We think of them most in winter,  
but they are here all year round.

Feasting on seeds, fruits and bugs,  
and nesting near the ground.

The robin in our trail today has been a busy bird,  
He's found out about the trees nearby,  
And wants to share what he's heard...



### Missing tags?

● We've put an eco-paint 'splodge' on each tree with a tag so, even if the tag is unfortunately missing at the time you visit, you'll know you found the right tree.

If you find a missing tag, and are able to do so, please report to:

[parks@lichfielddc.gov.uk](mailto:parks@lichfielddc.gov.uk) or 01543 308867.

Thank you.

## What to do:

Read the poem and use the map,  
To spot him in the trees.

I wonder who will spot him first?  
But mind your step, do please!



### Be safe!

- ✓ mind your step
- ✓ be mindful of other park users
- ✗ do not follow the trail in dangerous weather e.g. strong winds, ice, heavy rain and snow.



This **lime** has no citrus fruits,  
its flowers are good for bees.  
And as its wood does not warp,  
it's great for piano keys!



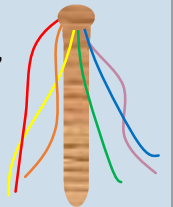
**Holly's** bright scarlet berries,  
make a welcome winter feast,  
for birds, voles and dormice  
and many mini-beasts.



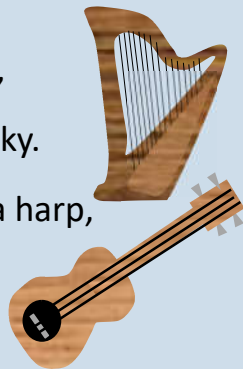
The **cherry** has a famous berry,  
and magnificent blossom in spring(s).  
Nowadays we use the wood for furniture -  
It used to be used for barrel rings!



The **hawthorn** is home to many animals,  
and its early blossom has a fragrant  
perfume.  
It used to be used for maypoles,  
and its thorns give birds shelter  
room.



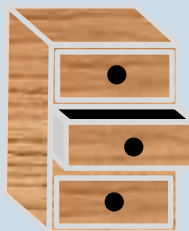
Robin is in a **maple** tree,  
its bark is brown and flaky.  
It can be used to make a harp,  
and even an 'ukulele!



This one's a **beech**, not a beach,  
no sand or seaweed here.  
But forked beech twigs were often used  
To see if water was near.



**Poplar** trees grow straight  
and tall,  
so make a good wind break.  
Once used to treat tooth decay,  
today good drawers they make...



A **sycamore** tree is a common sight,  
and its wood is easy to whittle.  
You may see it as a Lovespoon,  
a ladle or even a skittle!

