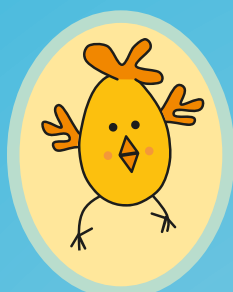


# Easter I-Spy Trail

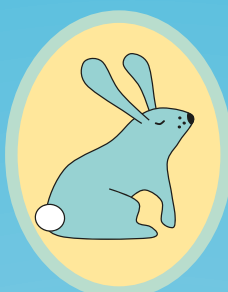
in Beacon Park



**Funky chick**



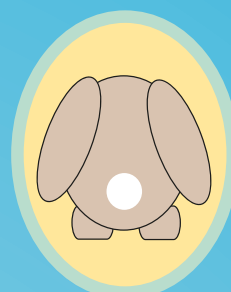
**Crunchy carrot**



**Peaceful bunny**



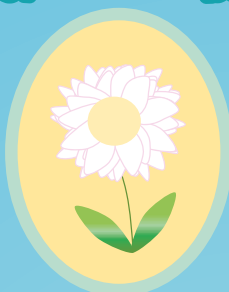
**Stewart the snail**



**Bunny back**



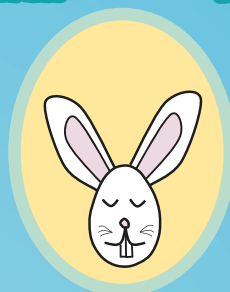
**Beautiful barrow**



**Delicate daisy**



**Beautiful bouquet**



**Bob the bunny**

## How to play

Starting at the wooden bridge, look for these 9 tags hanging in the trees on the path to the woodland that runs alongside the stream.

Take a photo of this poster and use the edit feature to mark them off as you find them, or use the online version by scanning the QR code.



01543 308867

[parcs@lichfielddc.gov.uk](mailto:parcs@lichfielddc.gov.uk)

[lichfieldhistoricparcs.co.uk](http://lichfieldhistoricparcs.co.uk)



Lichfield  
District Council



Lichfield  
Historic Parks

# Easter I-Spy Trail

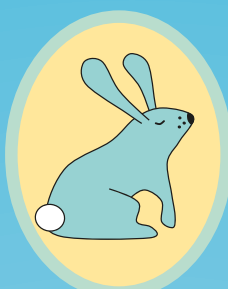
in Burntwood Park



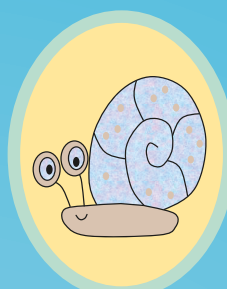
**Funky chick**



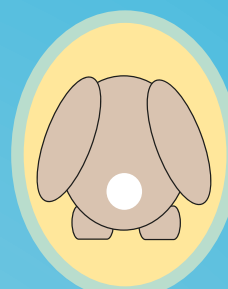
**Crunchy carrot**



**Peaceful bunny**



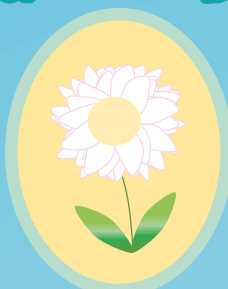
**Stewart the snail**



**Bunny back**



**Beautiful barrow**



**Delicate daisy**



**Beautiful bouquet**



**Bob the bunny**

## How to play

Look for these 9 tags that will be hanging in the trees at the Cannock Road end of the park.

Take a photo of this poster and use the edit feature to mark them off as you find them, or use the online version by scanning the QR code.



01543 308867

📧 [parcs@lichfielddc.gov.uk](mailto:parcs@lichfielddc.gov.uk)

🌐 [lichfielddc.gov.uk/parcs](http://lichfielddc.gov.uk/parcs)



Lichfield  
District Council