

**PARISH COUNCIL OF LONGDON**

30 JAN 2013

**Chairman: Cllr. A. J. Juxon**  
**Clerk: W. B. Sullivan**

RECEIVED

Tel.: (01543) 684965

24, Park Gate Road,  
Cannock Wood,  
RUGELEY,  
Staffordshire  
WS15 4RN

21<sup>st</sup> January 2013

Mrs. Clare Eggington,  
Principal Development Plans Officer,  
Democratic, Development and Legal Services,  
Lichfield District Council,  
District Council House,  
Frog Lane,  
LICHFIELD, Staffs.  
WS13 6YZ

Dear Mrs. Eggington,

APPLICATION FOR DESIGNATION OF A NEIGHBOURHOOD AREA

At its meeting of 11<sup>th</sup> December 2012, Longdon Parish Council decided to develop a Neighbourhood Plan and accordingly requests Lichfield District Council to designate Longdon Parish, as shown on the attached map, as a Neighbourhood Area.

The Council believes that it is appropriate that the complete and well-established parish is designated as a Neighbourhood Area. This is exemplified by the many vigorous cross-parish community organisations that are active in the parish, and the Parish Council understands that the residents, businesses and workers in the village and hamlets wish the issues and interests to be co-ordinated.

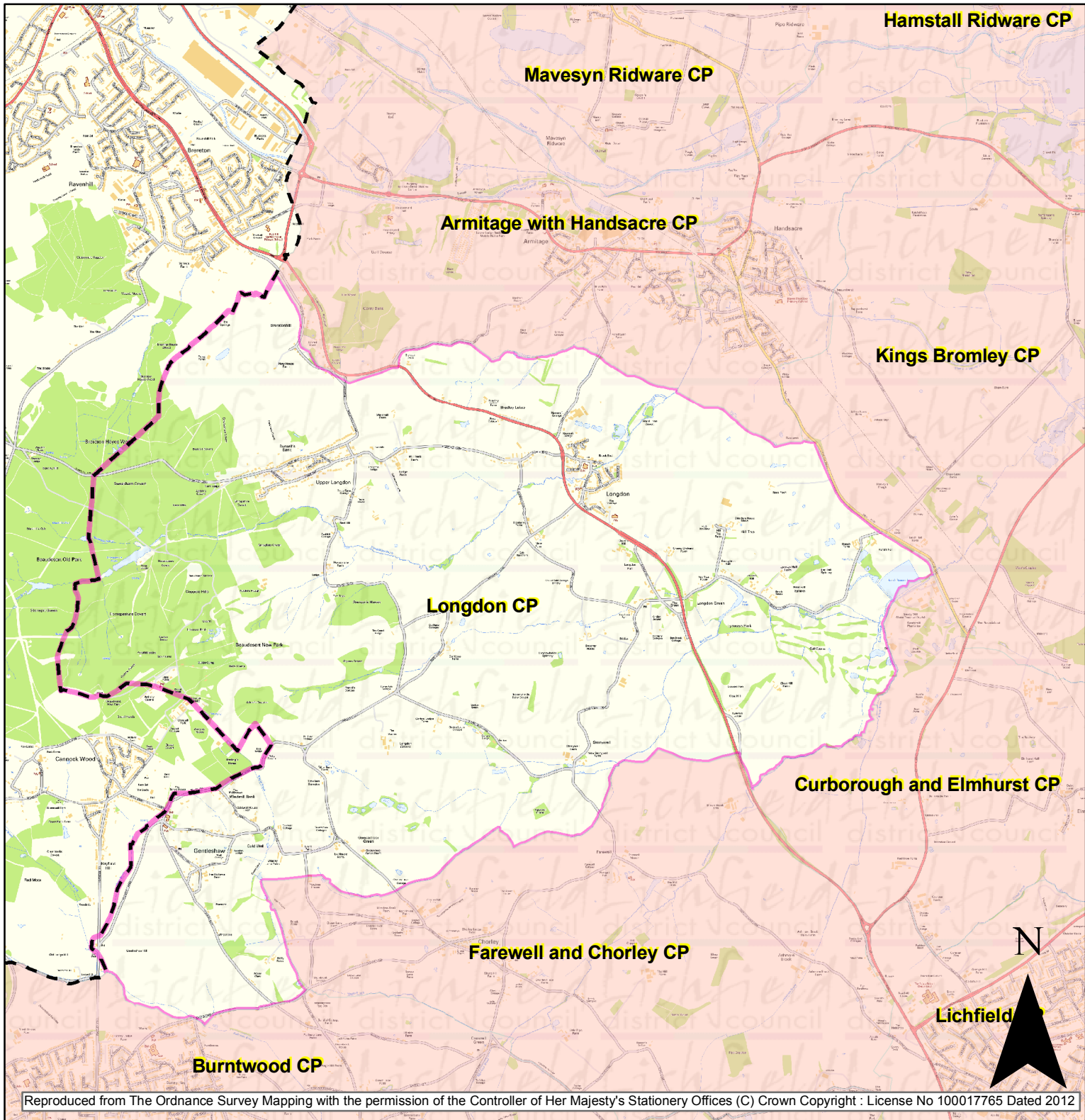
The Parish Council believes that it is a relevant body in accordance with Section 61G of the 1990 Act to oversee the application and development of a Neighbourhood Plan.

Yours sincerely,

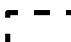



W. B. Sullivan  
(CLERK)

# Longdon Parish



## Key

-  Lichfield District Boundary
-  Longdon Parish

Map supplied by Lichfield District Council

**Lichfield**  
district council  
[www.lichfielddc.gov.uk](http://www.lichfielddc.gov.uk)