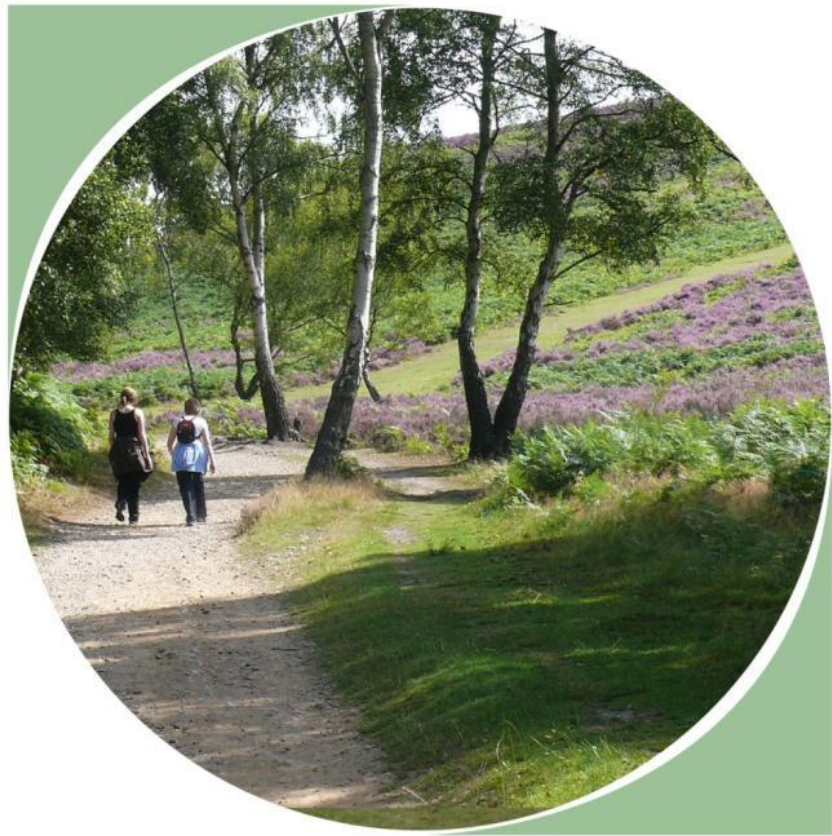




Cannock Chase Visitor Survey



Durwyn Liley

Date: 6th February 2013

Version: FINAL

Map Annex to accompany visitor report

Map 1: Visitor Survey Locations

Map 2: Car-parks surveyed

Map 3: Tally data, rates by activity

Map 4: Car-park counts

Map 5: Activities by location

Map 6: Home postcodes of interviewees: all data

Map 7: Home postcodes of interviewees: subset of Map 6

Map 8: Home postcodes of interviewees in relation to local authority subareas

Map 9: Home postcodes by survey point

Map 10: Home postcodes of walkers

Map 11: Home postcodes of cyclists

Map 12: Home postcodes of dog walkers

Map 13: Home postcodes of horse riders

Map 14 Home postcodes of people playing games

Map 15: Home postcodes of people who came running

Map 16: Home postcodes of mountain bikers

Map 17: Home postcodes of people who came orienteering

Map 18: Home postcodes of people who come to eat out

Map 19: Home postcodes of people who come to birdwatch

Map 20: Home postcodes by frequency of visit

Map 21: Convex hulls based on frequency of visit

Map 22: Convex hulls based on frequency of visit (subset of Map 21)

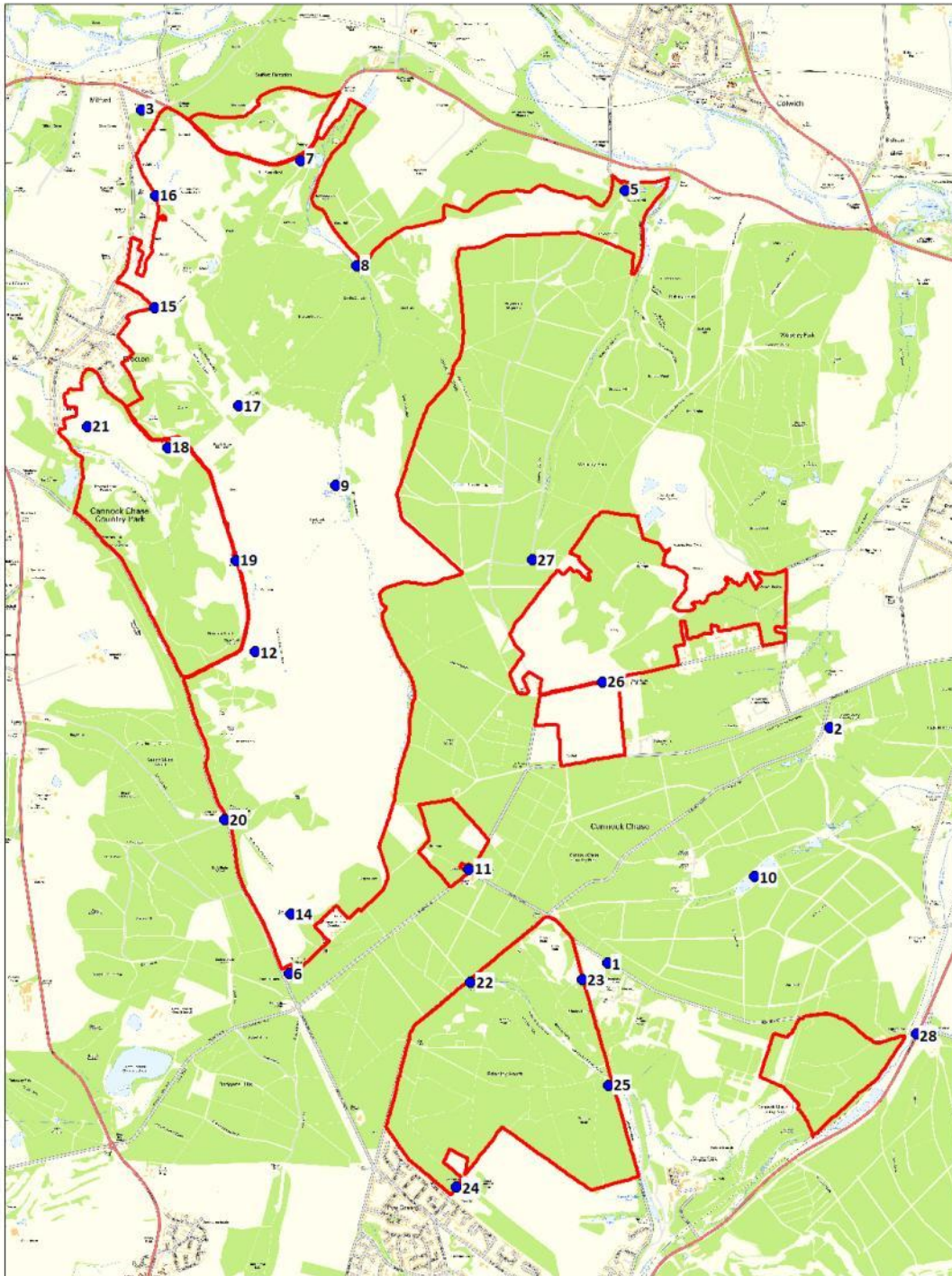
Map 23: Current numbers of housing by subarea and distance band

Map 24: Current housing and new housing by subarea and distance band

Map 25: Number of interviewee postcodes per 1km band and by subarea

Map 26: Total number of visitors by subarea and distance band

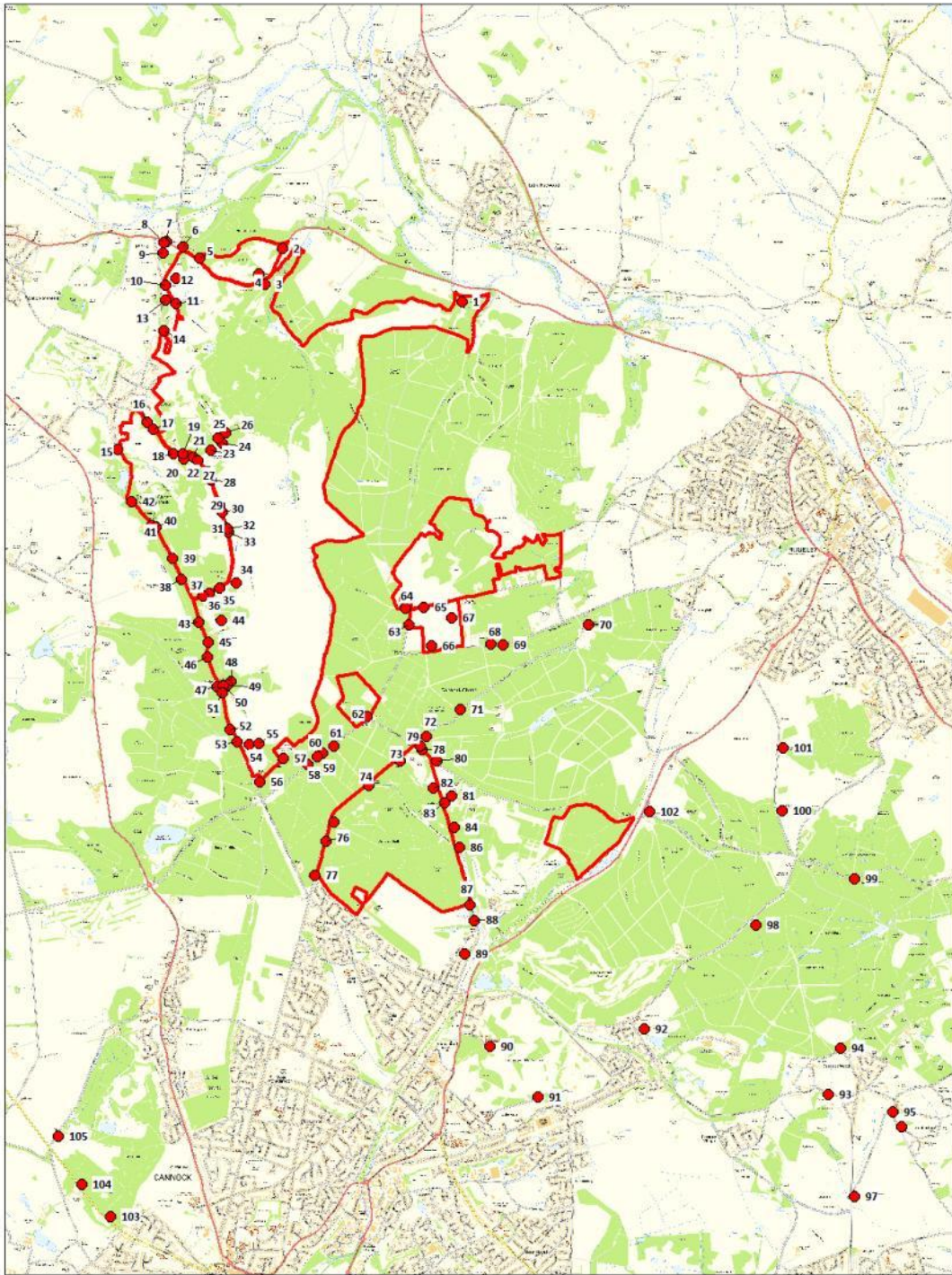
Map 27: Percentage of future visitors by subarea



**Map 1: Visitor Survey Locations
(Face-face interviews)**

Contains Ordnance Survey Data.
©Crown copyright and database right 2011.

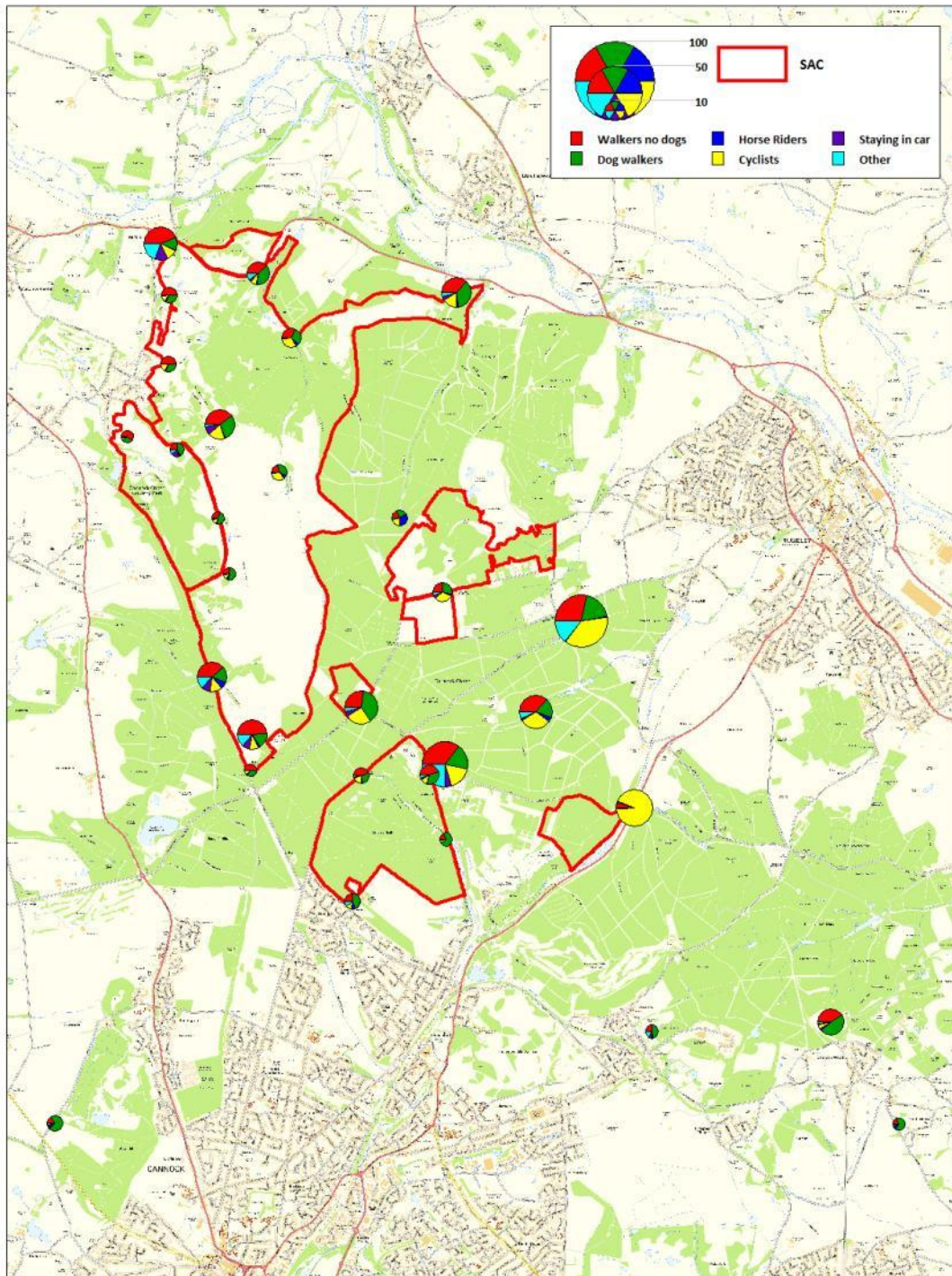
- Survey Location
- SAC



Map 2: Car parks surveyed

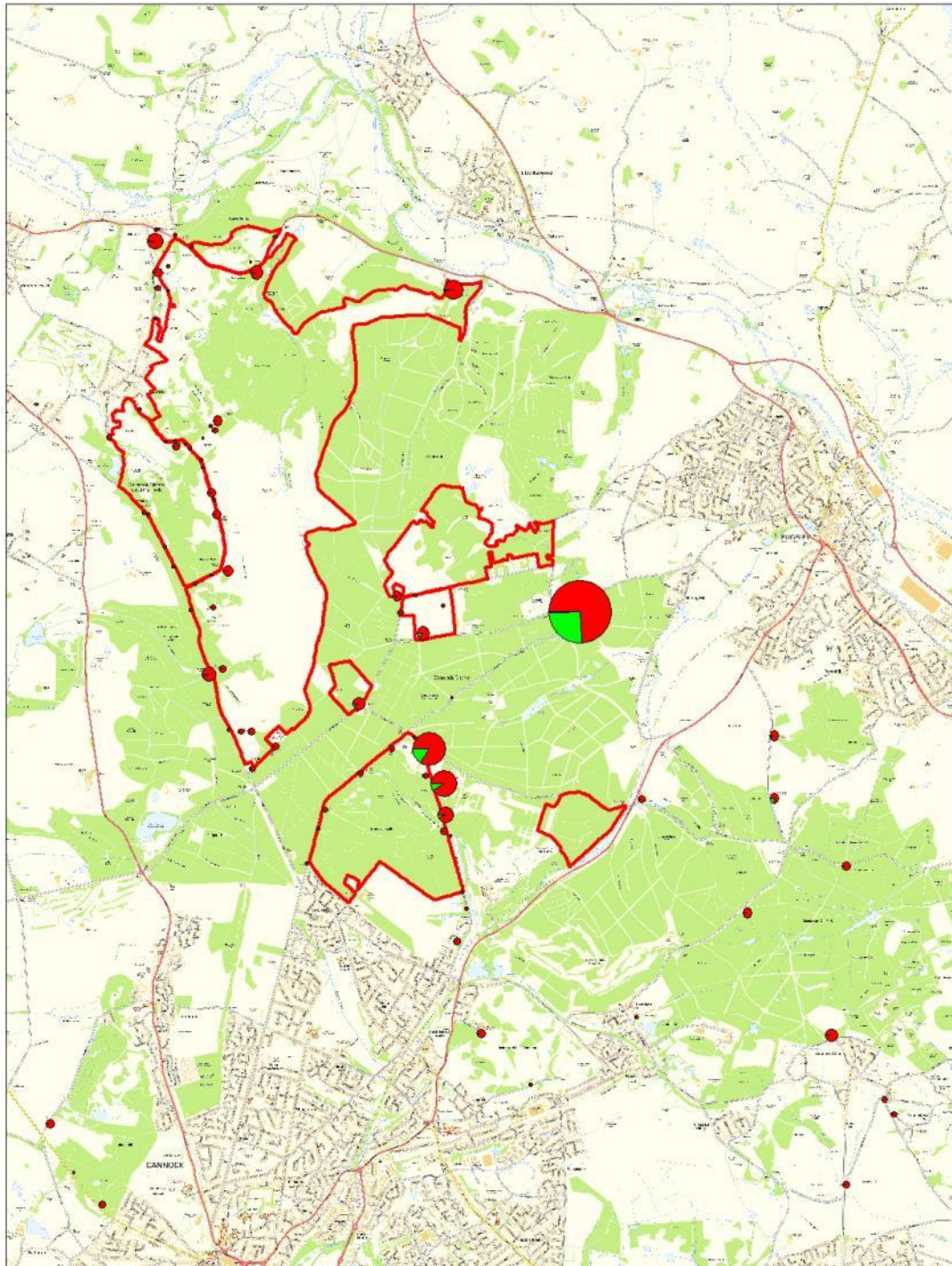
Contains Ordnance Survey Data.
 ©Crown copyright and database right 2011.

- Parking location
- SAC



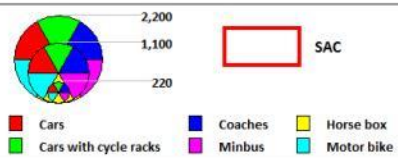
**Map 3: Tally Data, rates per activity
(People per hour)**

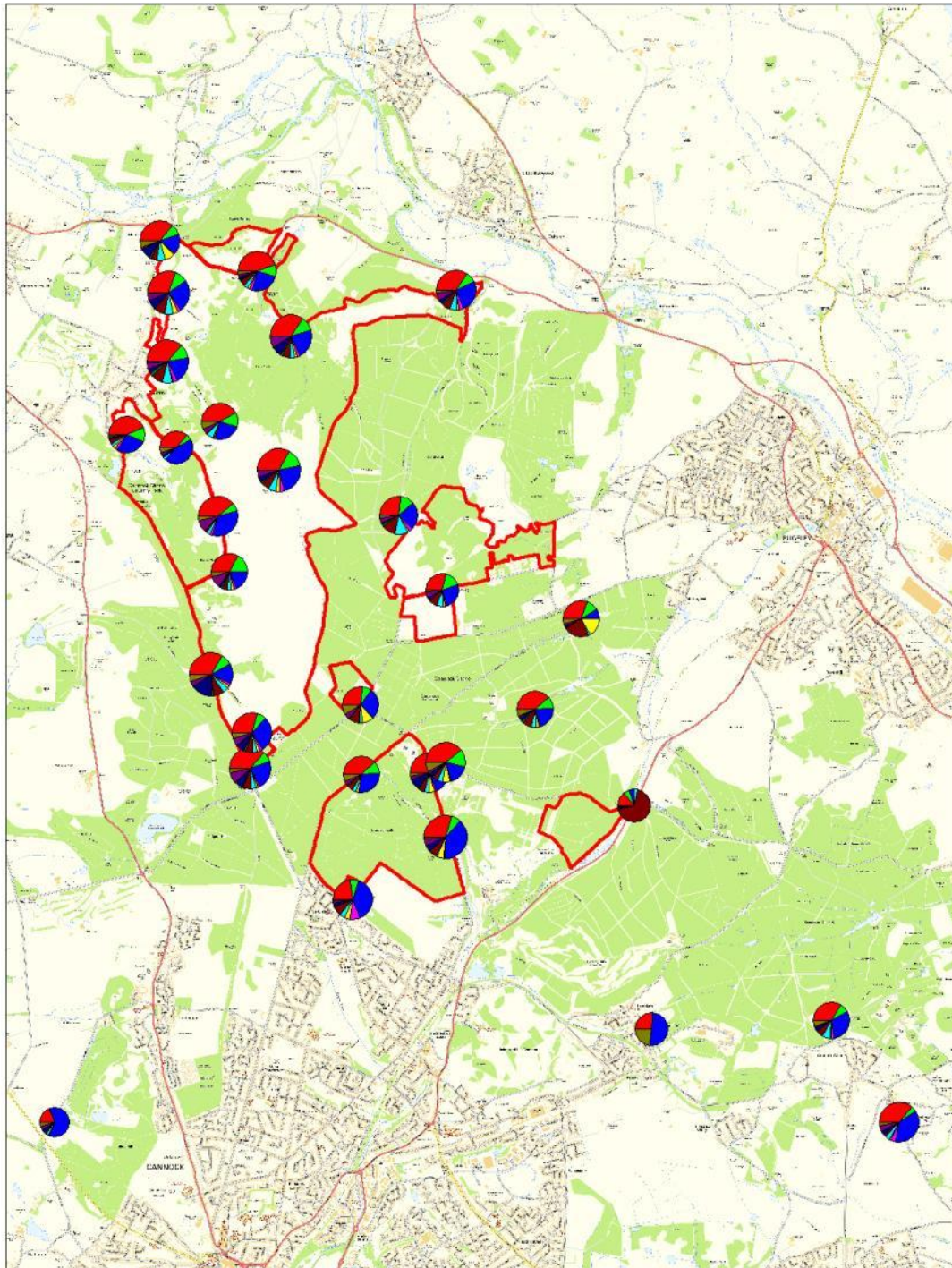
Contains Ordnance Survey Data.
©Crown copyright and database right 2011.



Map 4: Car-park counts, by vehicle type

Contains Ordnance Survey Data.
©Crown copyright and database right 2011.

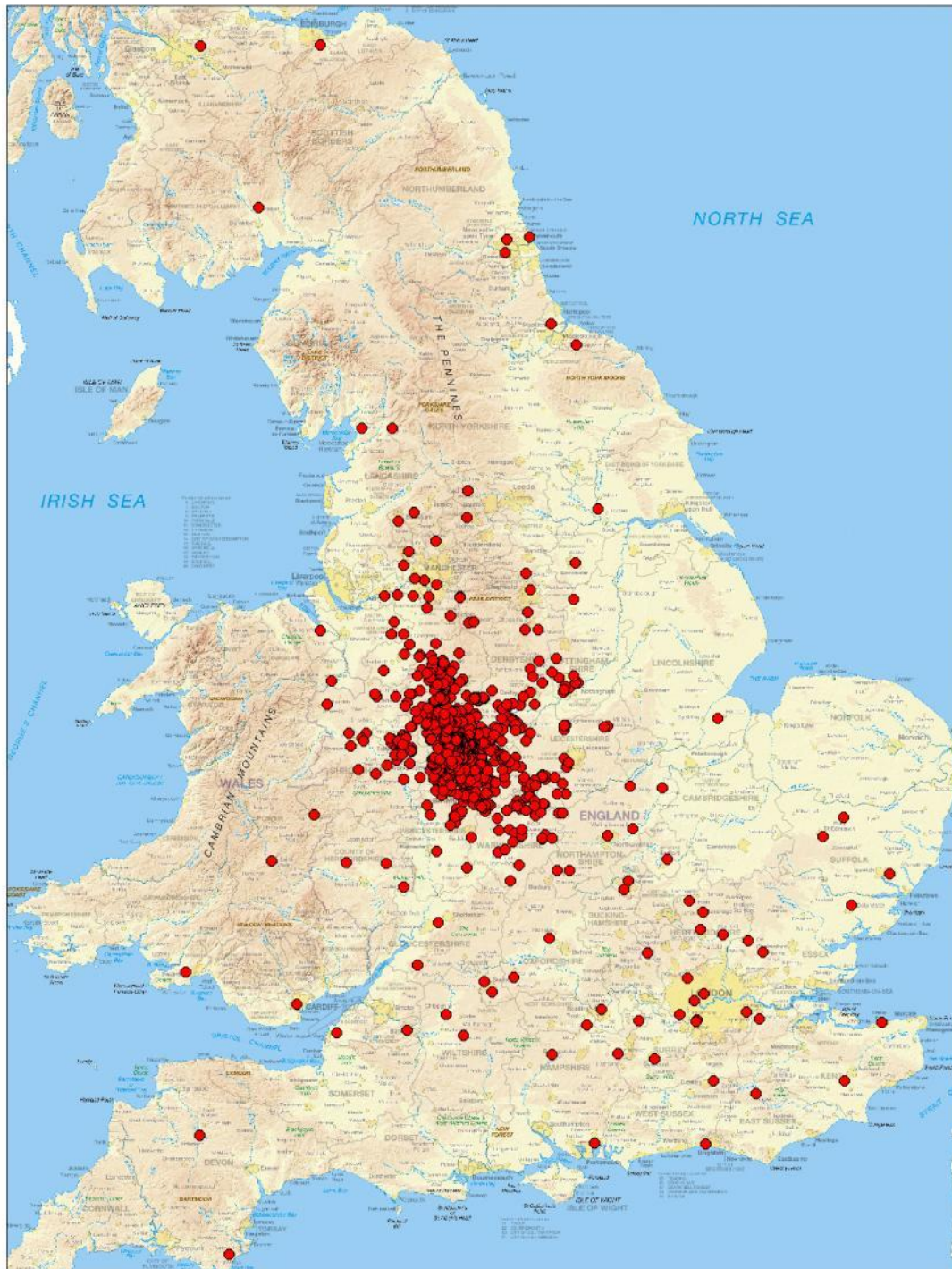




Map 5: Activities by location
 (% interviewees stating each activity)

Contains Ordnance Survey Data.
 ©Crown copyright and database right 2011.

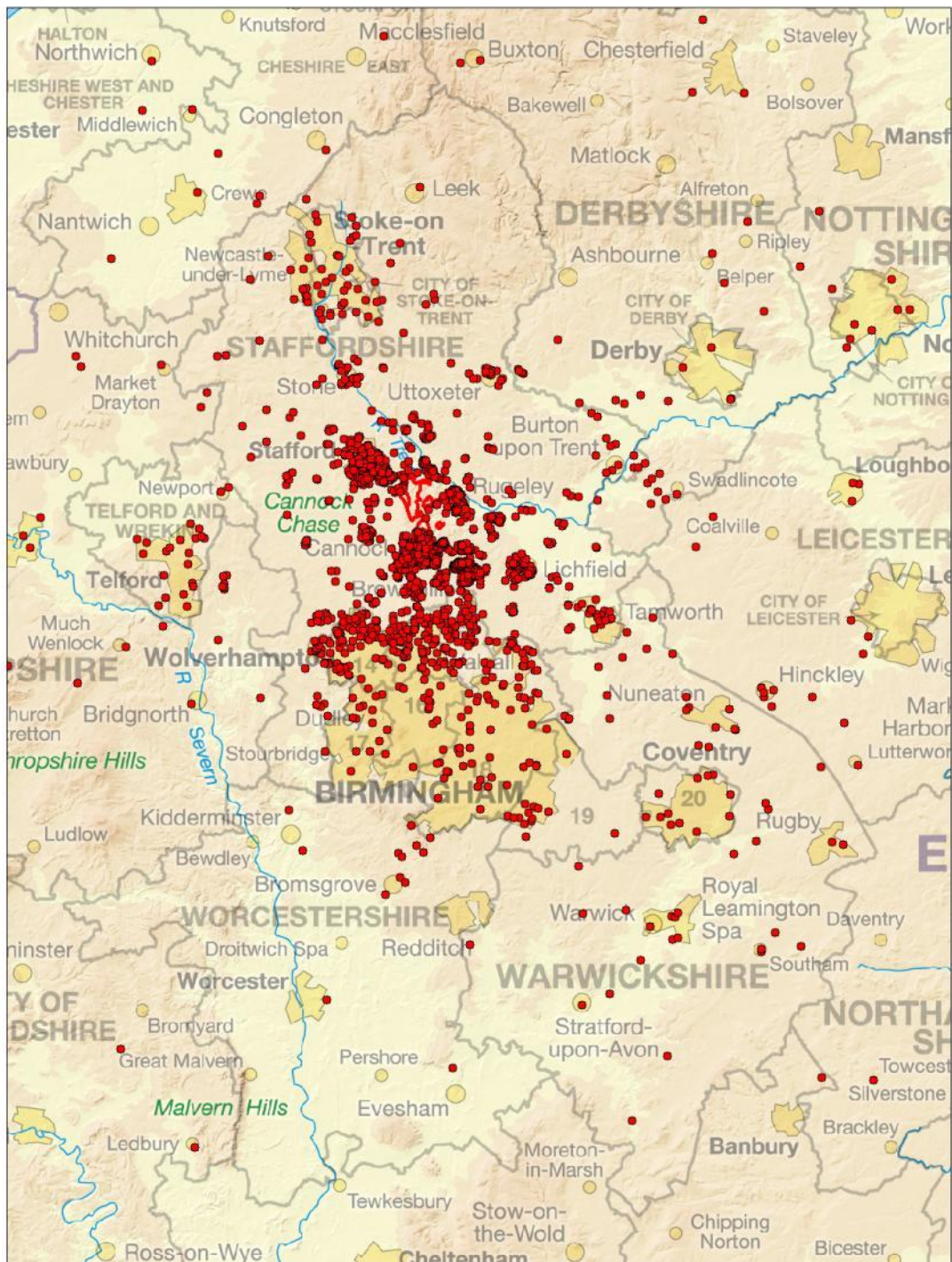




Map 6: Home postcodes of interviewees: all data

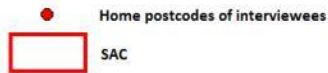
Contains Ordnance Survey Data.
©Crown copyright and database right 2011.

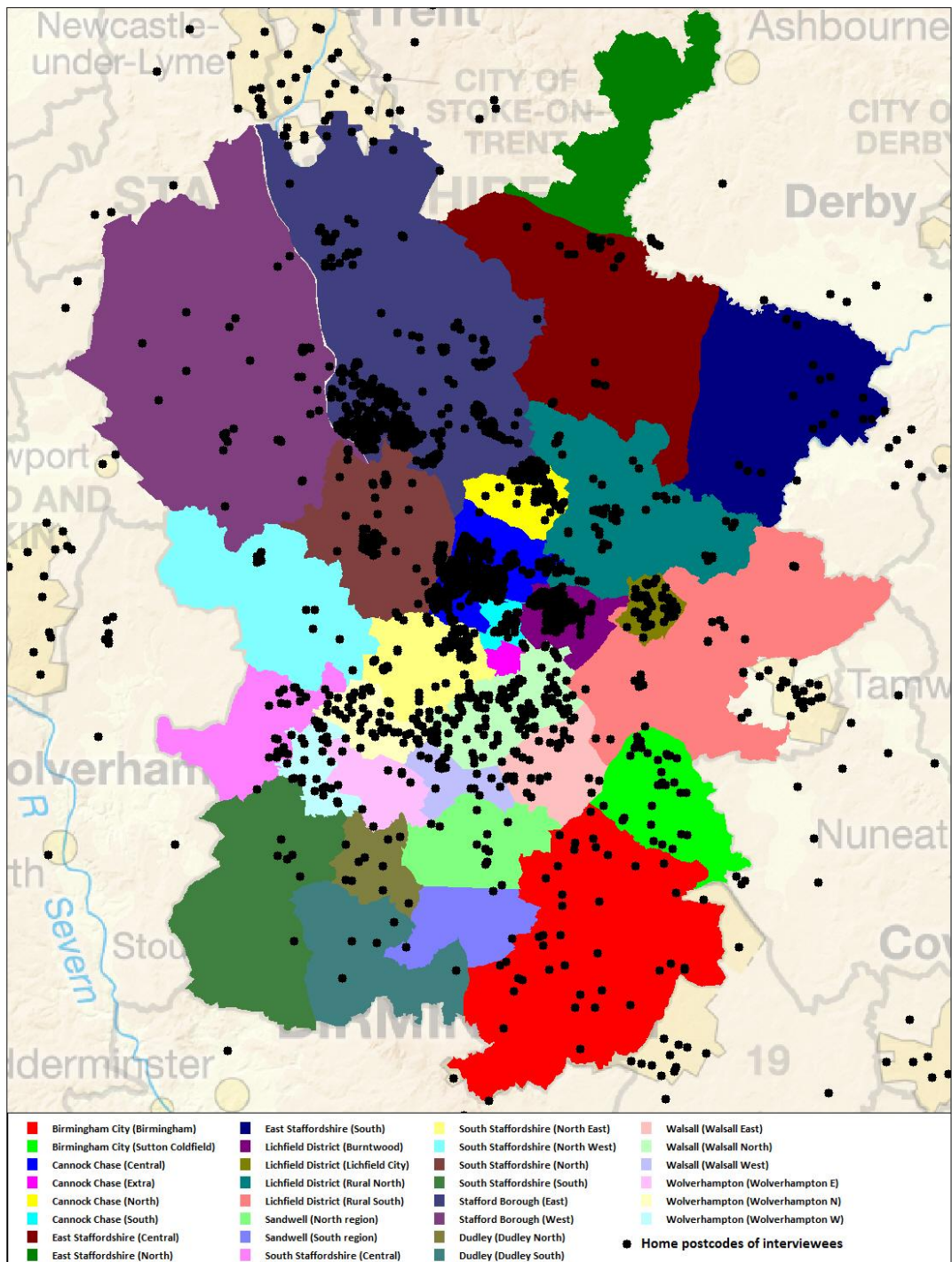
● Home postcodes of interviewees



**Map 7: Home postcodes:
subset from Map 6**

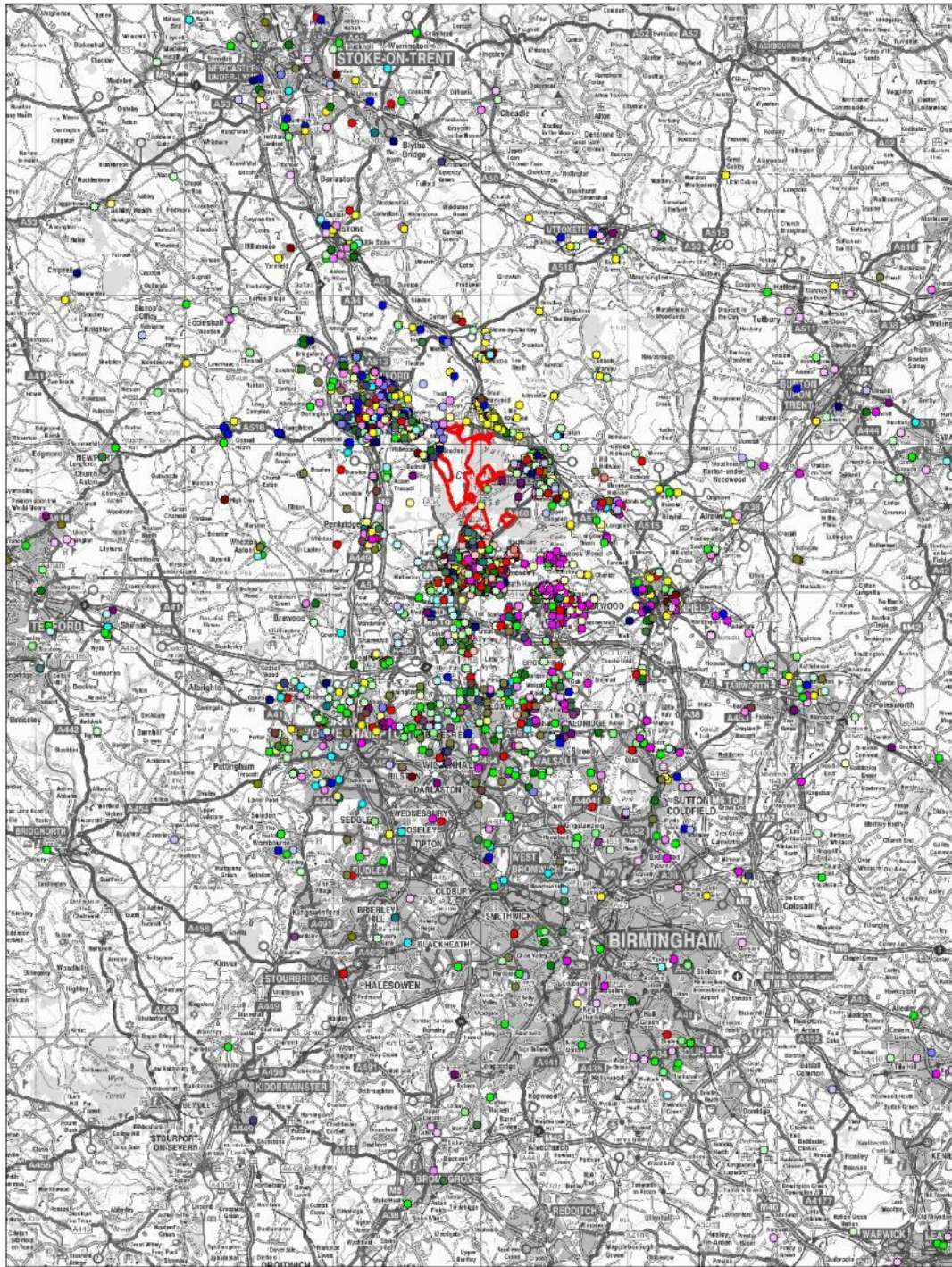
Contains Ordnance Survey Data.
©Crown copyright and database right 2011.





**Map 8: Home postcodes of interviewees (all valid postcodes)
in relation to local authority sub-areas**

Contains Ordnance Survey Data.
©Crown copyright and database right 2011.

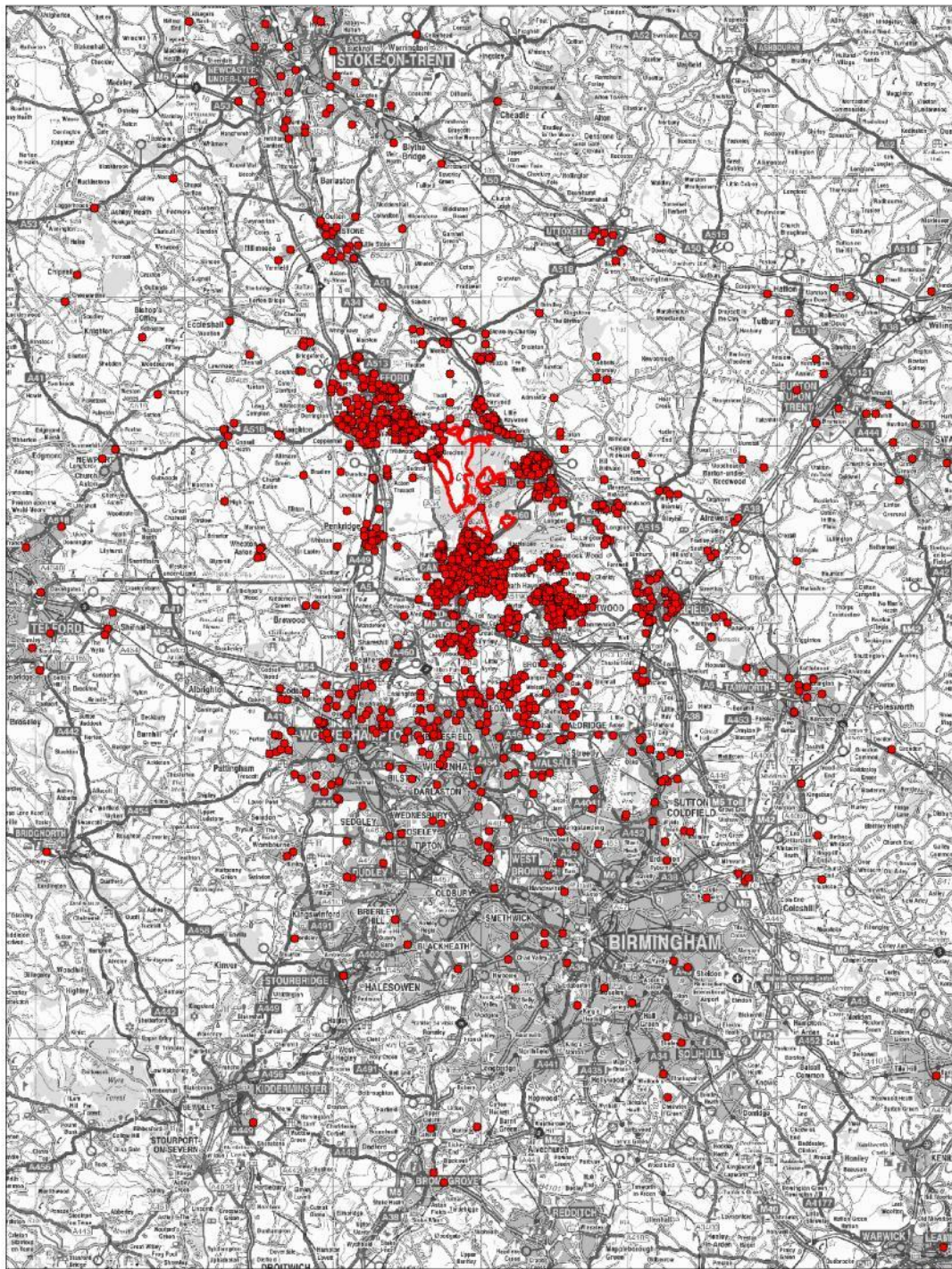


**Map 9: Home postcodes
by survey point**

Contains Ordnance Survey Data.
©Crown copyright and database right 2011.

- | | | | | |
|-----------|-----------|------------|------------|------------|
| ● 1 (130) | ● 7 (25) | ● 13 (17) | ● 19 (53) | ● 25 (54) |
| ● 2 (221) | ● 8 (70) | ● 14 (132) | ● 20 (61) | ● 26 (206) |
| ● 3 (96) | ● 9 (65) | ● 15 (134) | ● 21 (67) | ● 27 (84) |
| ● 4 (313) | ● 10 (50) | ● 16 (147) | ● 22 (39) | ● 28 (129) |
| ● 5 (202) | ● 11 (44) | ● 17 (121) | ● 23 (194) | ● 29 (165) |
| ● 6 (62) | ● 12 (42) | ● 18 (72) | ● 24 (60) | ● 30 (151) |



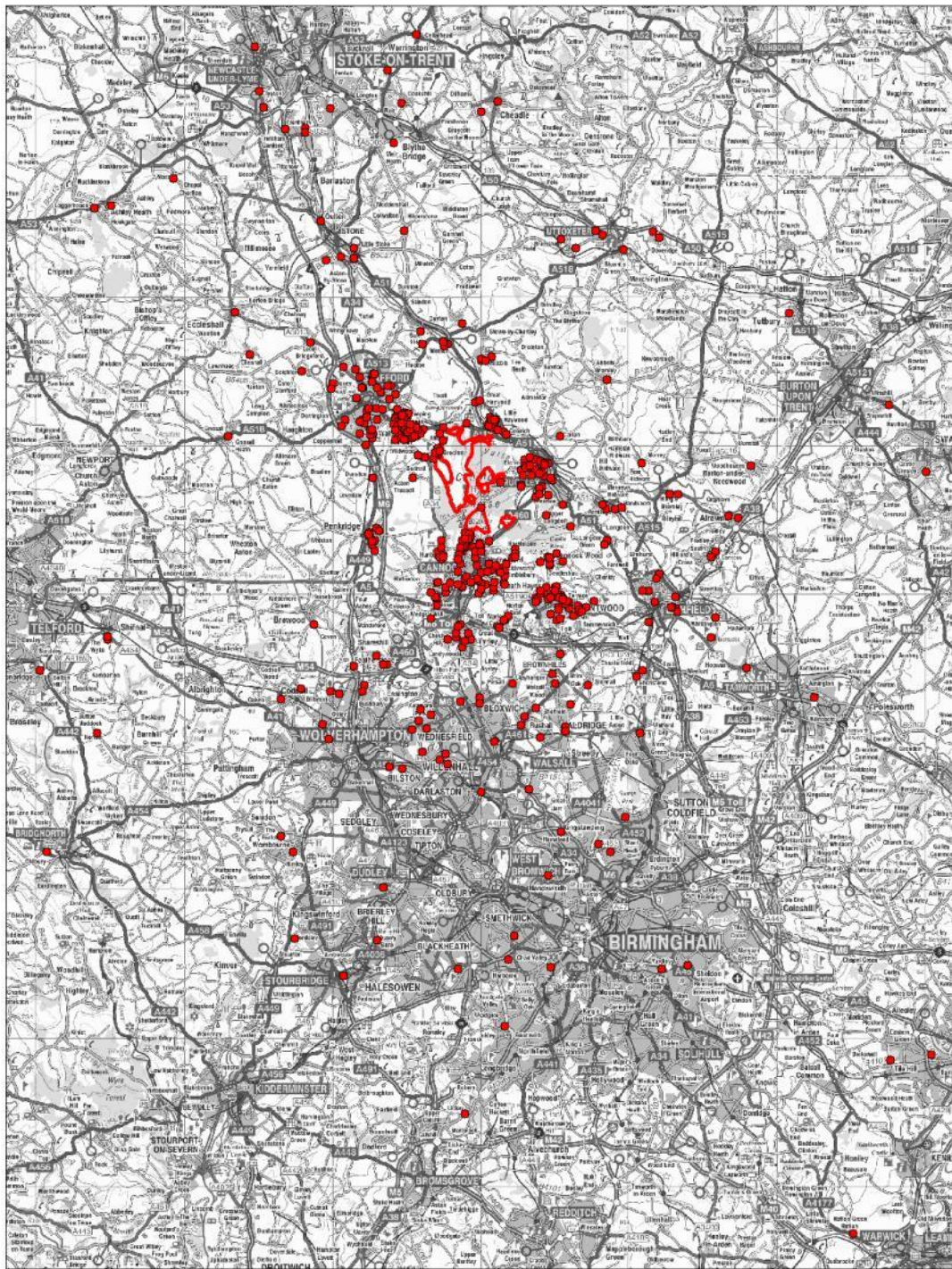


Map 10: Home postcodes of walkers

Contains Ordnance Survey Data.
©Crown copyright and database right 2011.

● Walkers (1946)

□ SAC

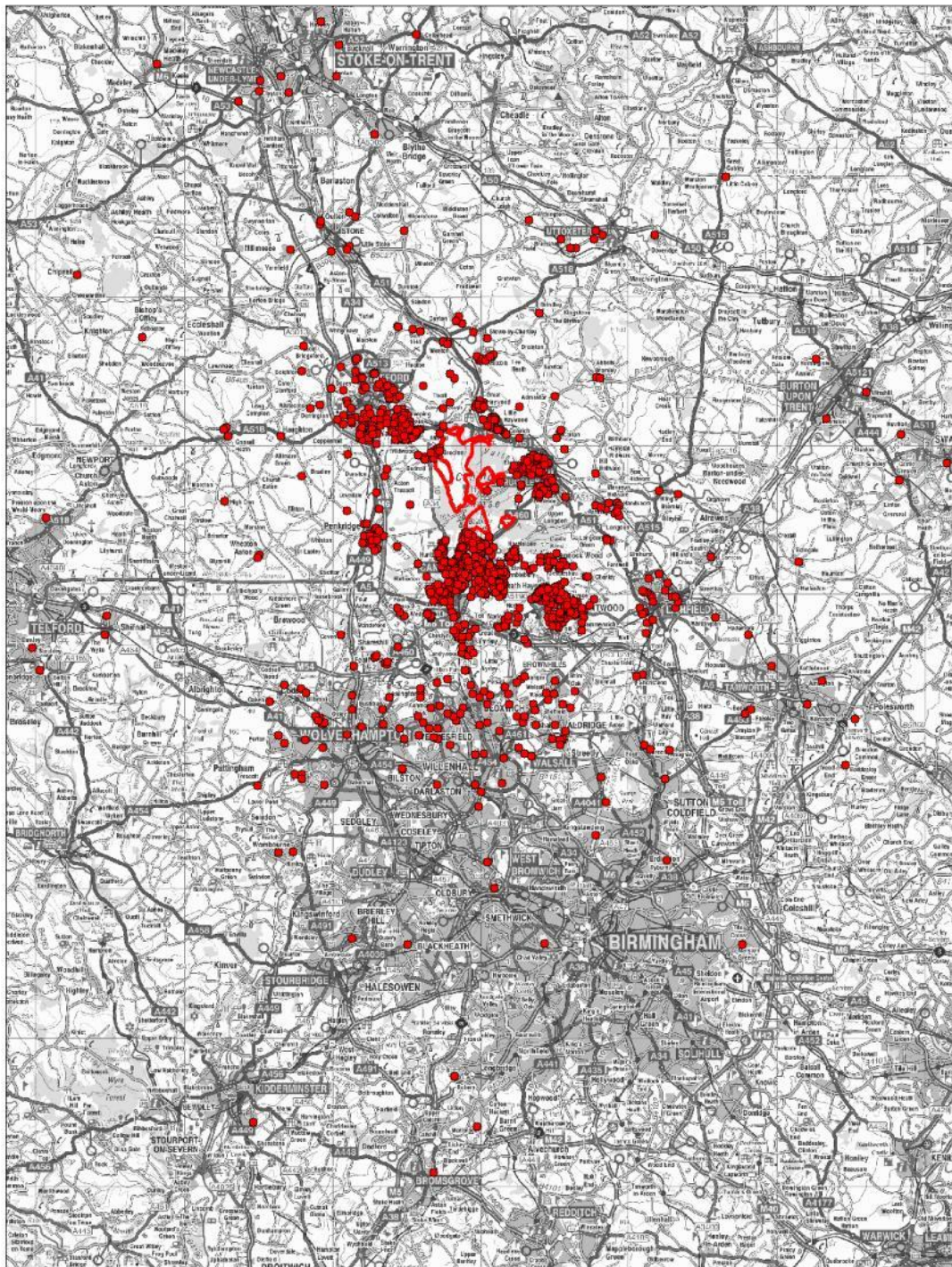


**Map 11: Home postcodes
of cyclists**

Contains Ordnance Survey Data.
©Crown copyright and database right 2011.

● Cyclists (547)

□ SAC

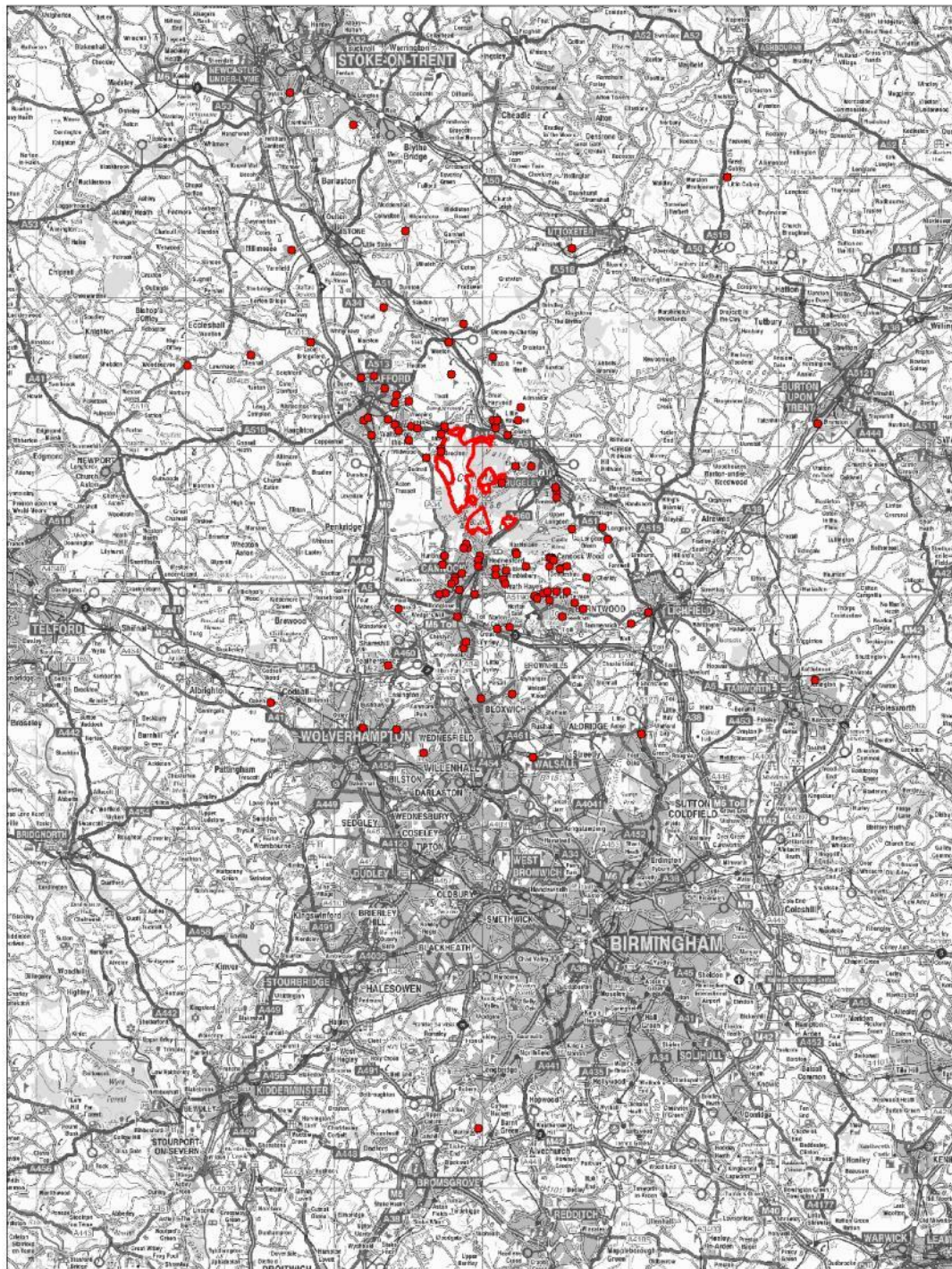


**Map 12: Home postcodes
of dog walkers**

Contains Ordnance Survey Data.
©Crown copyright and database right 2011.

● Dog Walkers (1573)

□ SAC

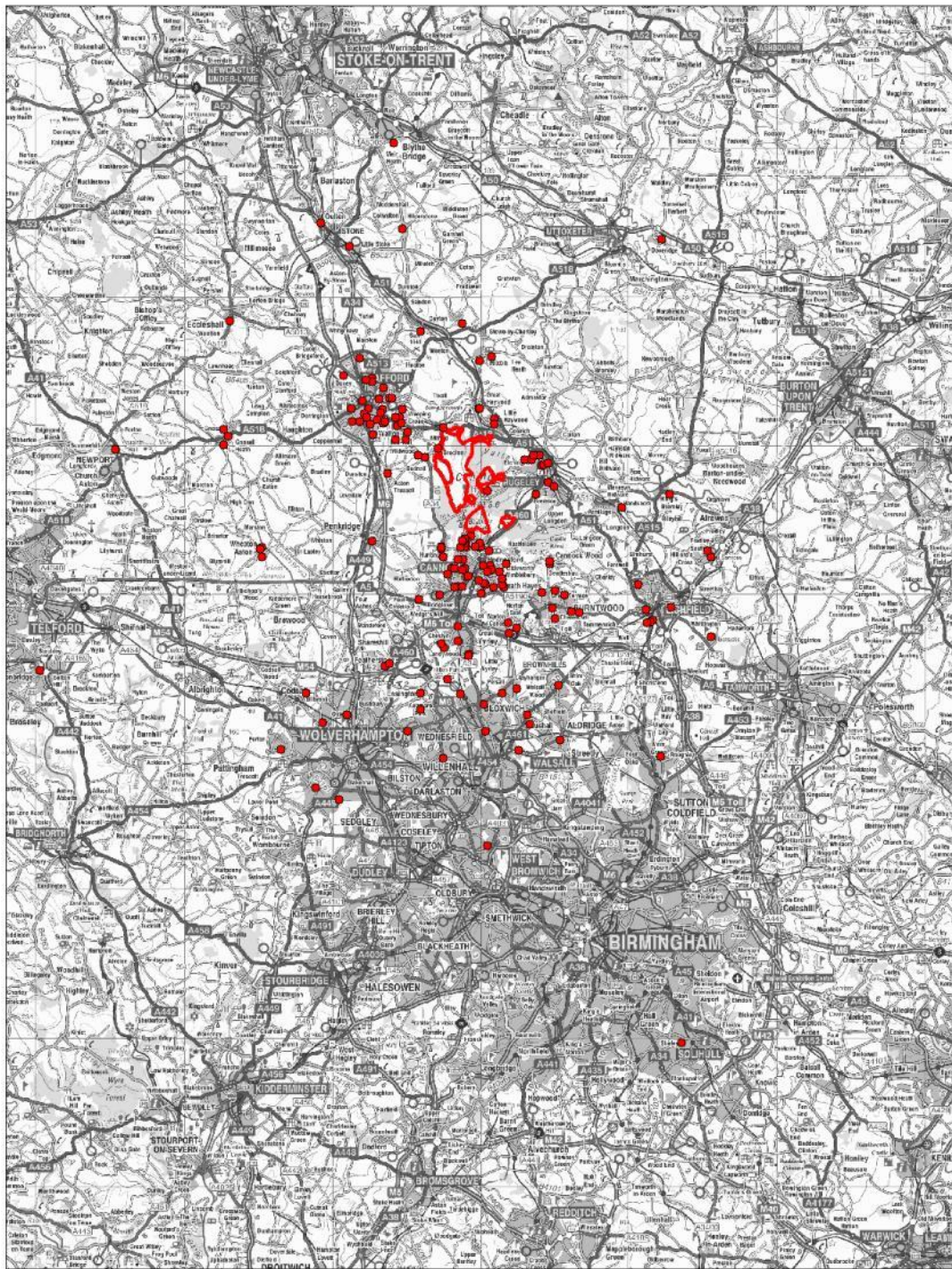


**Map 13: Home postcodes
of horse riders**

Contains Ordnance Survey Data.
©Crown copyright and database right 2011.

● Horse Riders (128)

□ SAC

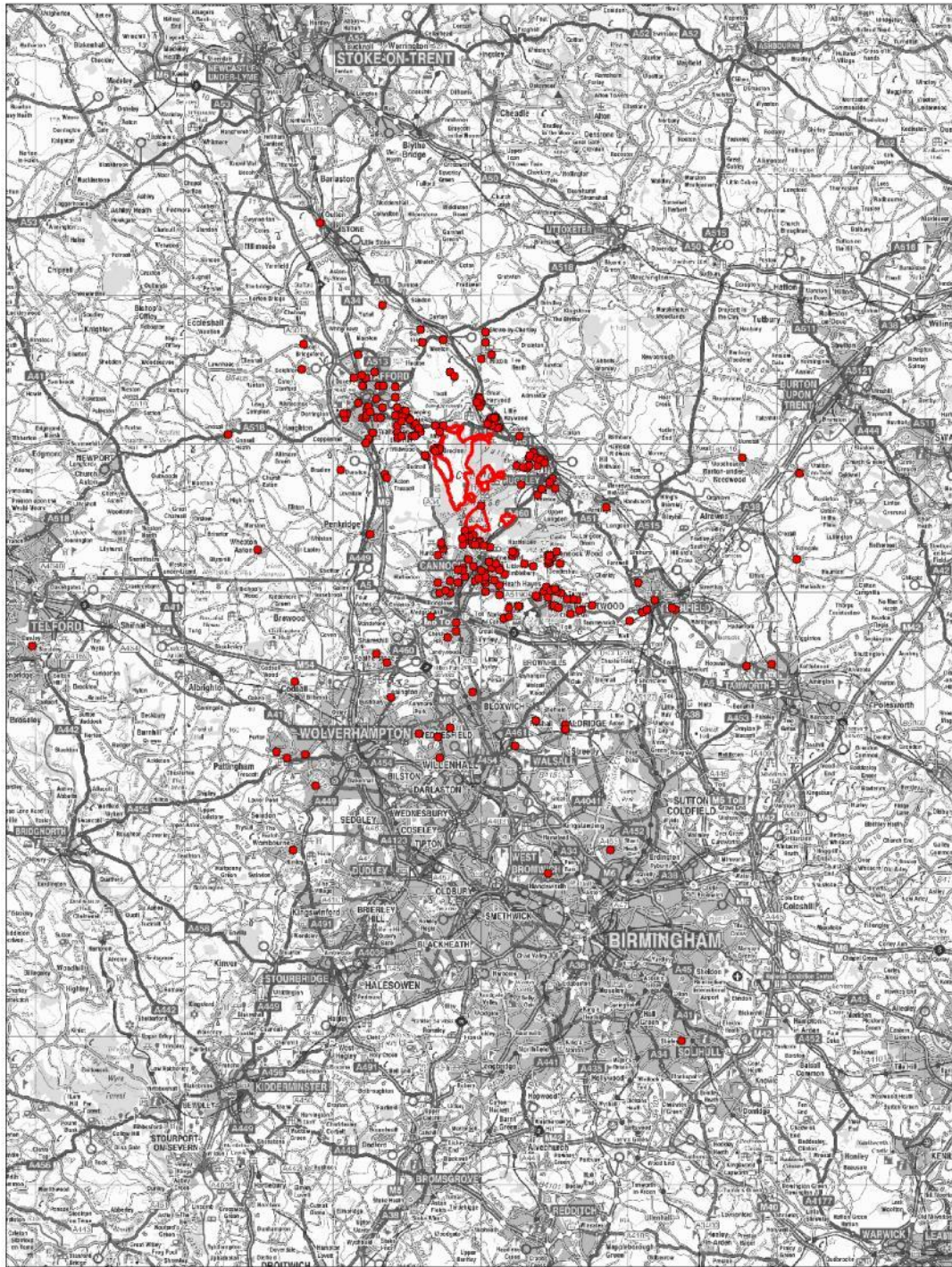


**Map 14: Home postcodes
of people playing games**

Contains Ordnance Survey Data.
©Crown copyright and database right 2011.

● People Playing Games (185)

□ SAC

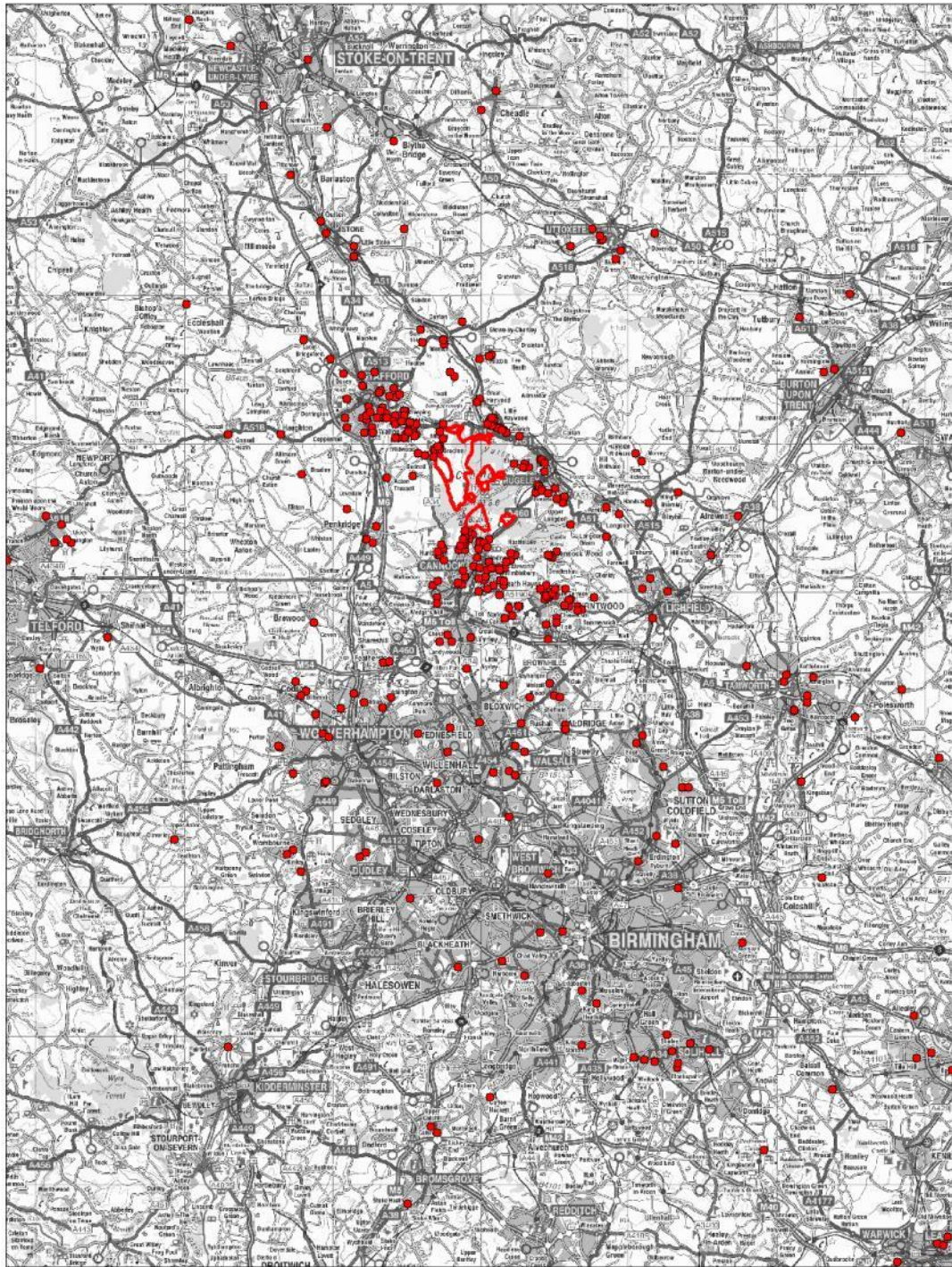


**Map 15: Home postcodes
of people who came running**

Contains Ordnance Survey Data.
©Crown copyright and database right 2011.

● Runners (283)

□ SAC

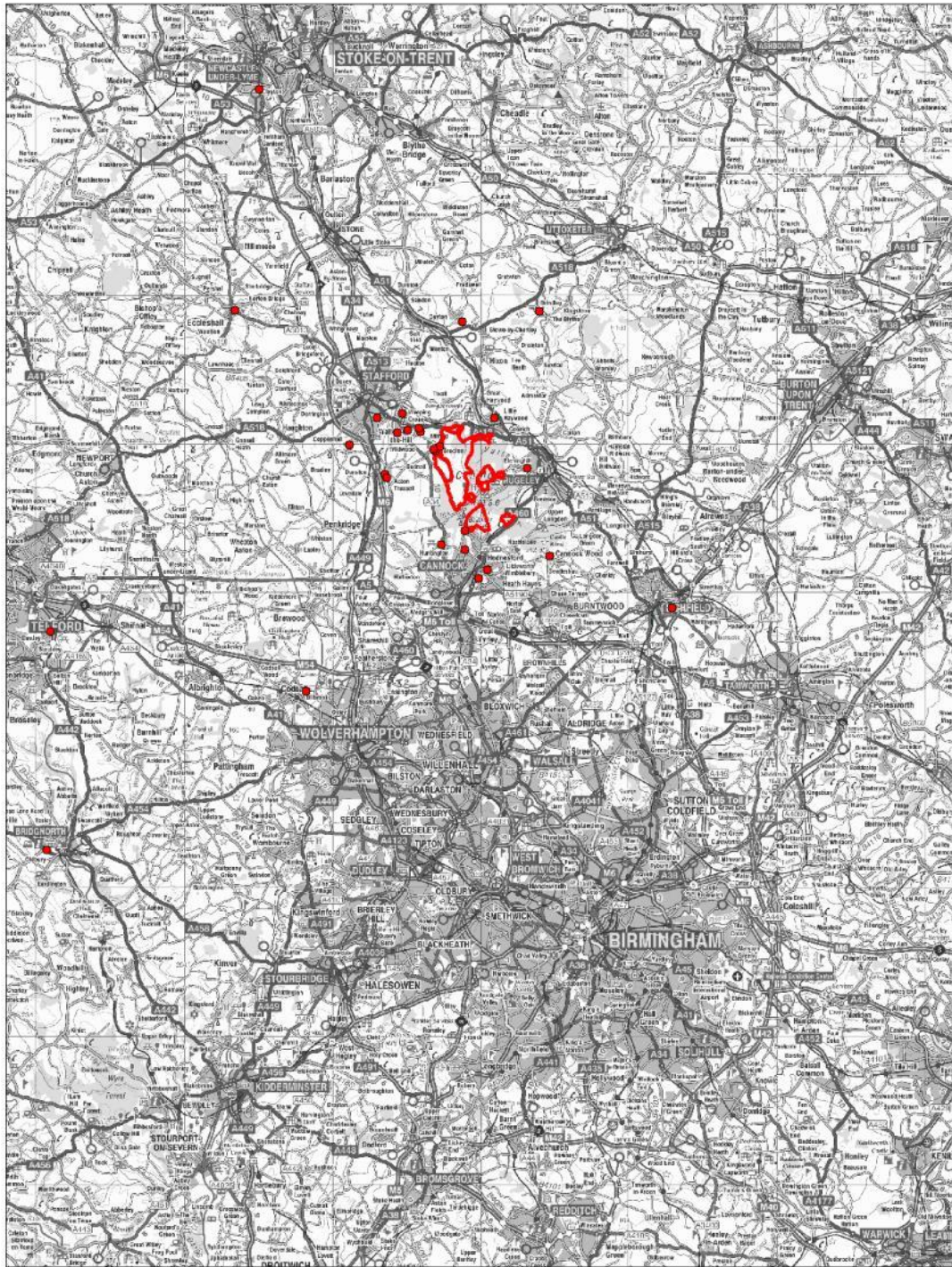


**Map 16: Home postcodes
of mountain bikers**

Contains Ordnance Survey Data.
©Crown copyright and database right 2011.

● Mountain Bikers (517)

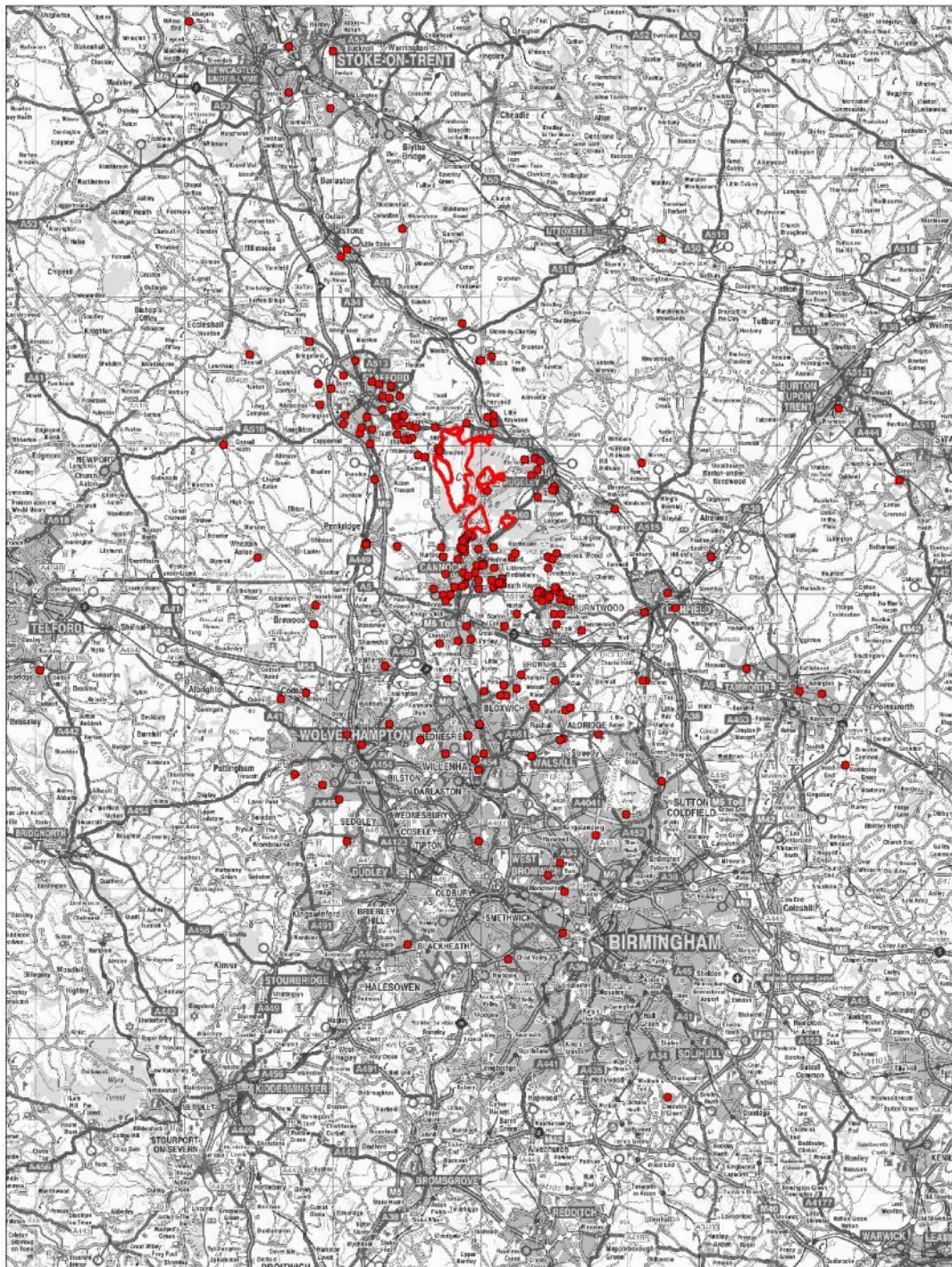
□ SAC



**Map 17: Home postcodes
of people who come orienteering**

Contains Ordnance Survey Data.
©Crown copyright and database right 2011.

- Orienteer (32)
- SAC

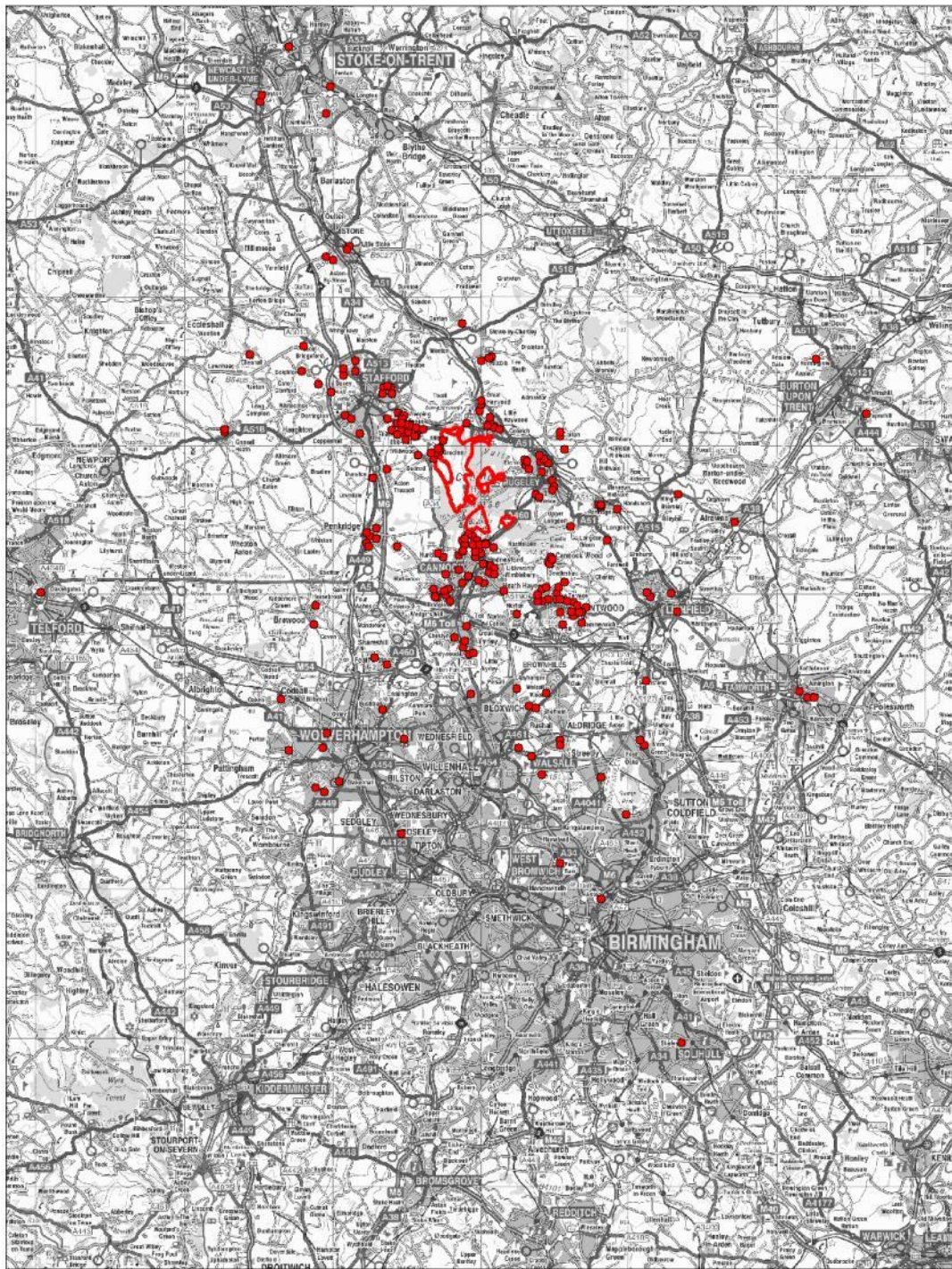


**Map 18: Home postcodes
of people who visit to eat out**

Contains Ordnance Survey Data.
©Crown copyright and database right 2011.

● People who visit to eat out (240)

□ SAC

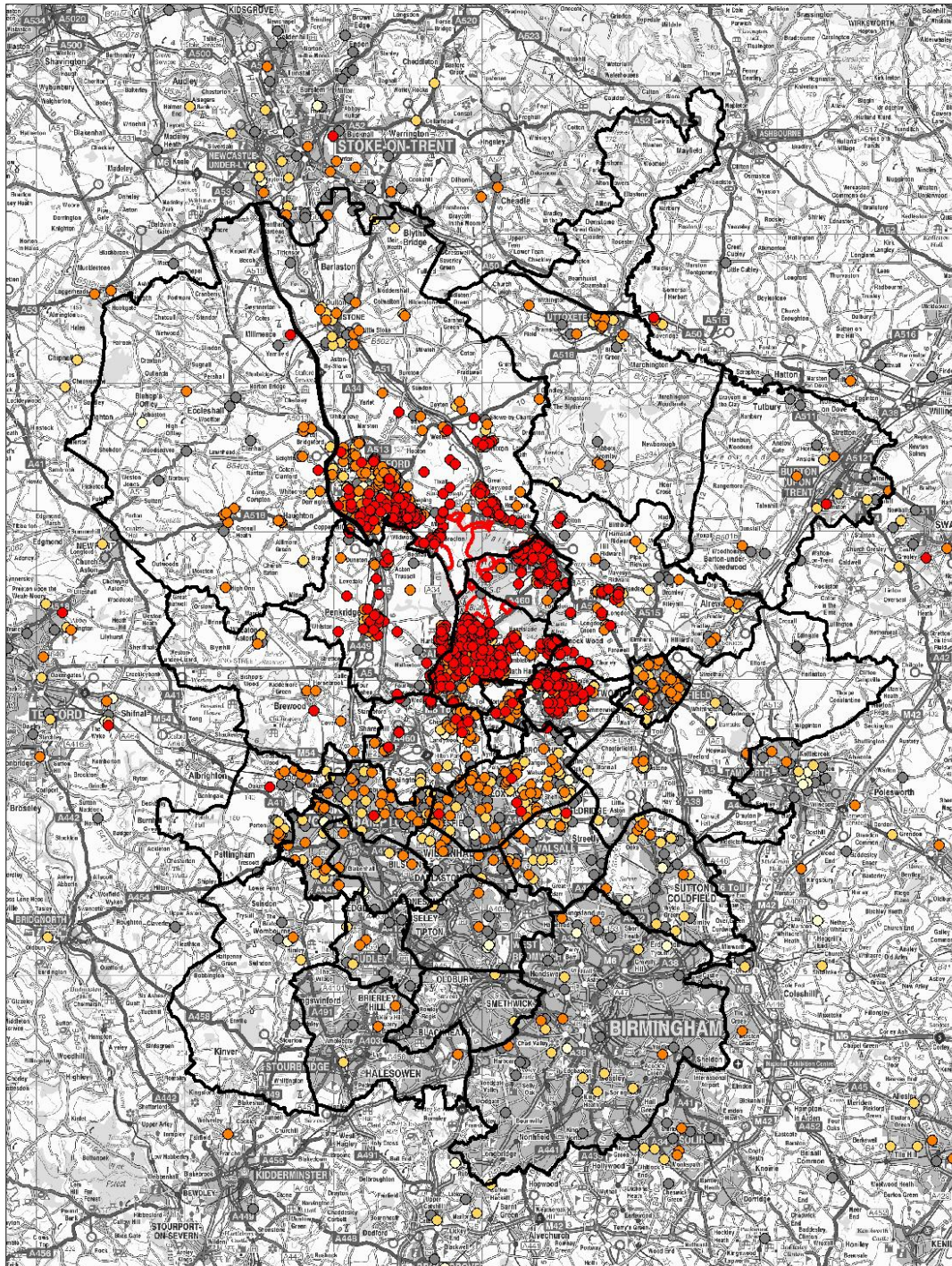


Map 19: Home postcodes of people who birdwatch

Contains Ordnance Survey Data.
©Crown copyright and database right 2011.

● Birdwatchers (260)

□ SAC



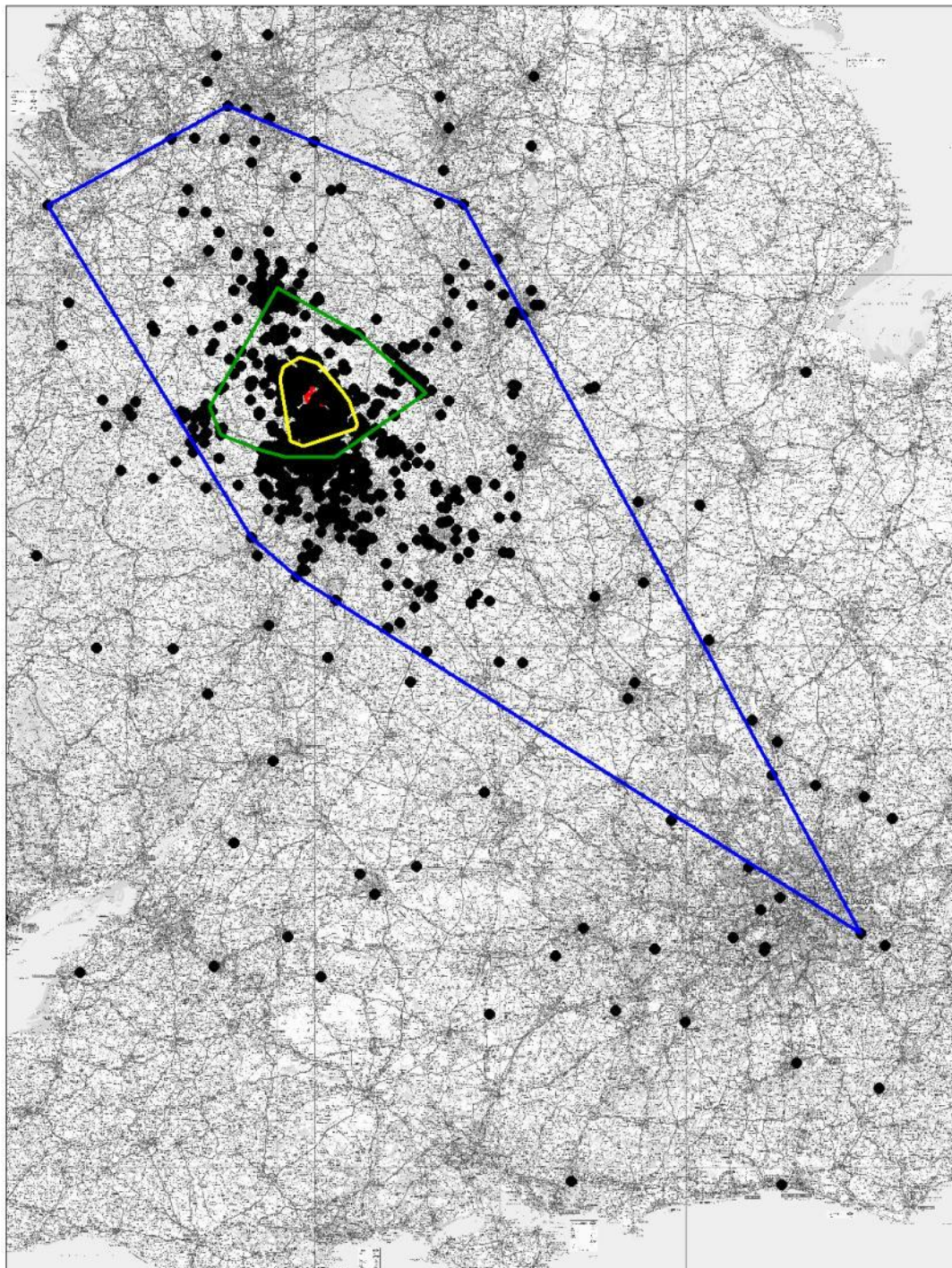
Map 20: Home postcodes by frequency of visit

Contains Ordnance Survey Data.
©Crown copyright and database right 2011.

- Every day
- Every week
- Once a month
- Once a year
- Other



SAC



Map 21: Convex hulls based on frequency of visit

Contains Ordnance Survey Data.
©Crown copyright and database right 2011.



All those who visit every week



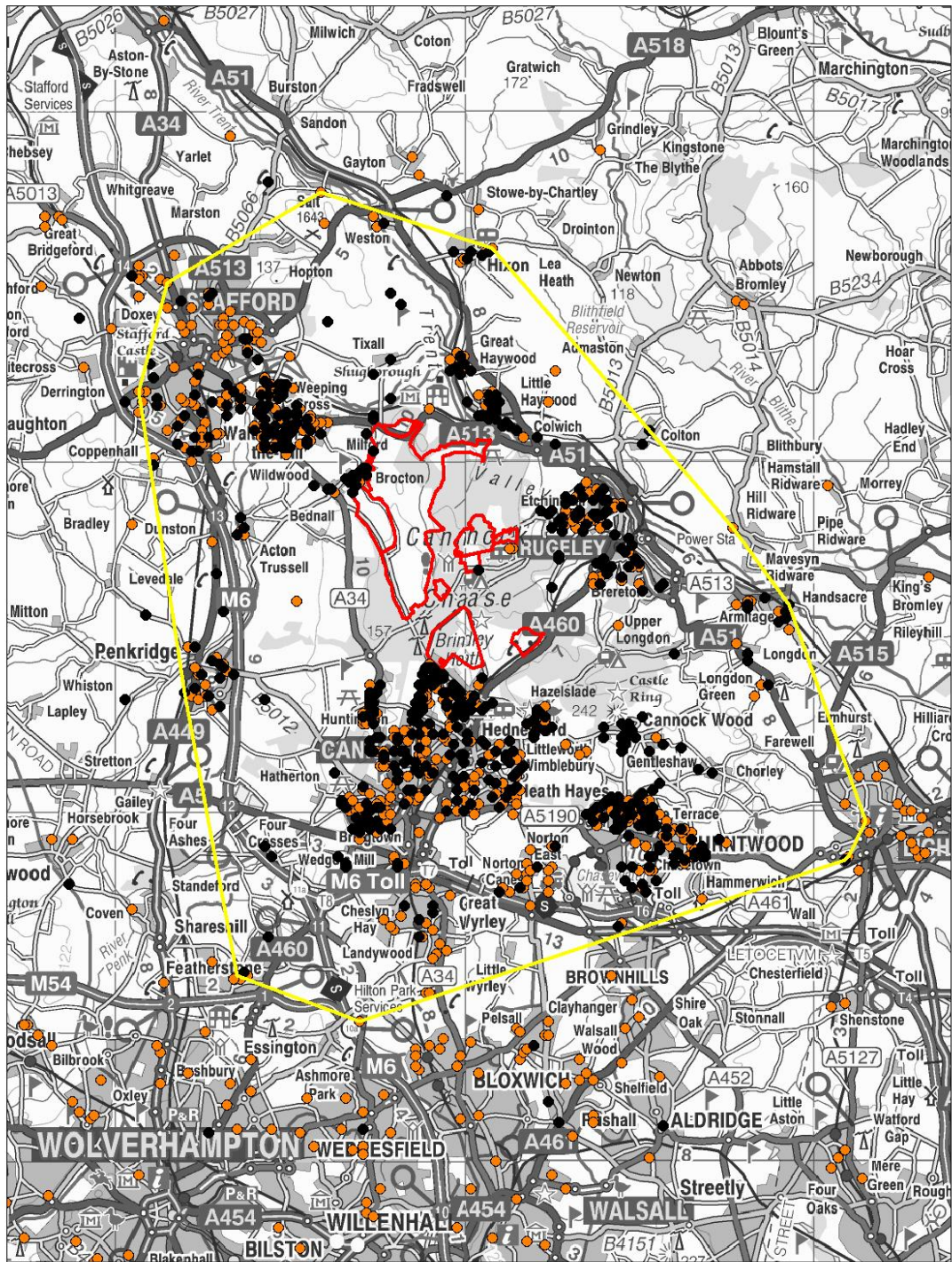
All those who visit every day



Closest 75 percent of those visiting every week/every day



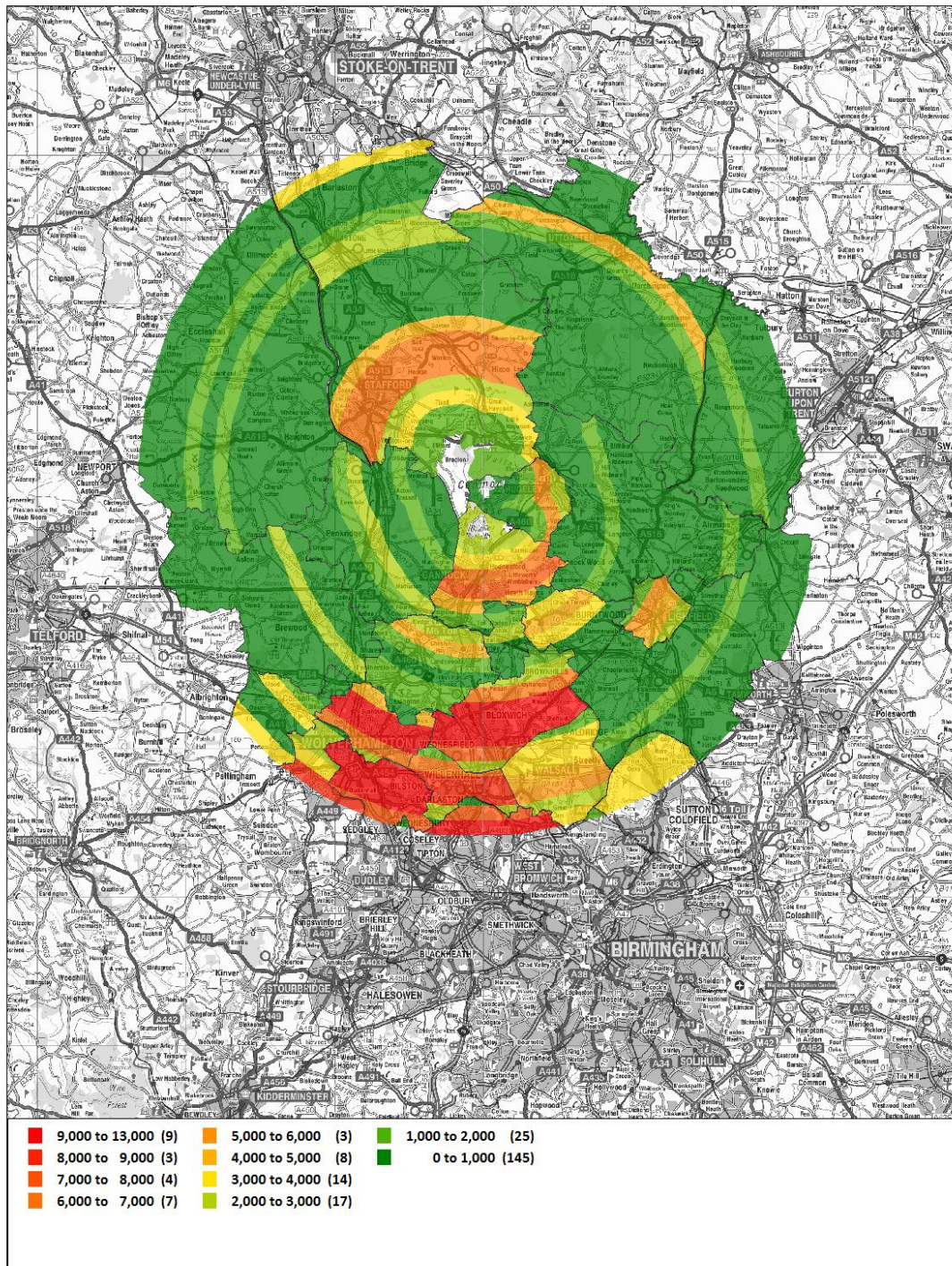
SAC



Map 22: Convex hulls based on frequency of visit

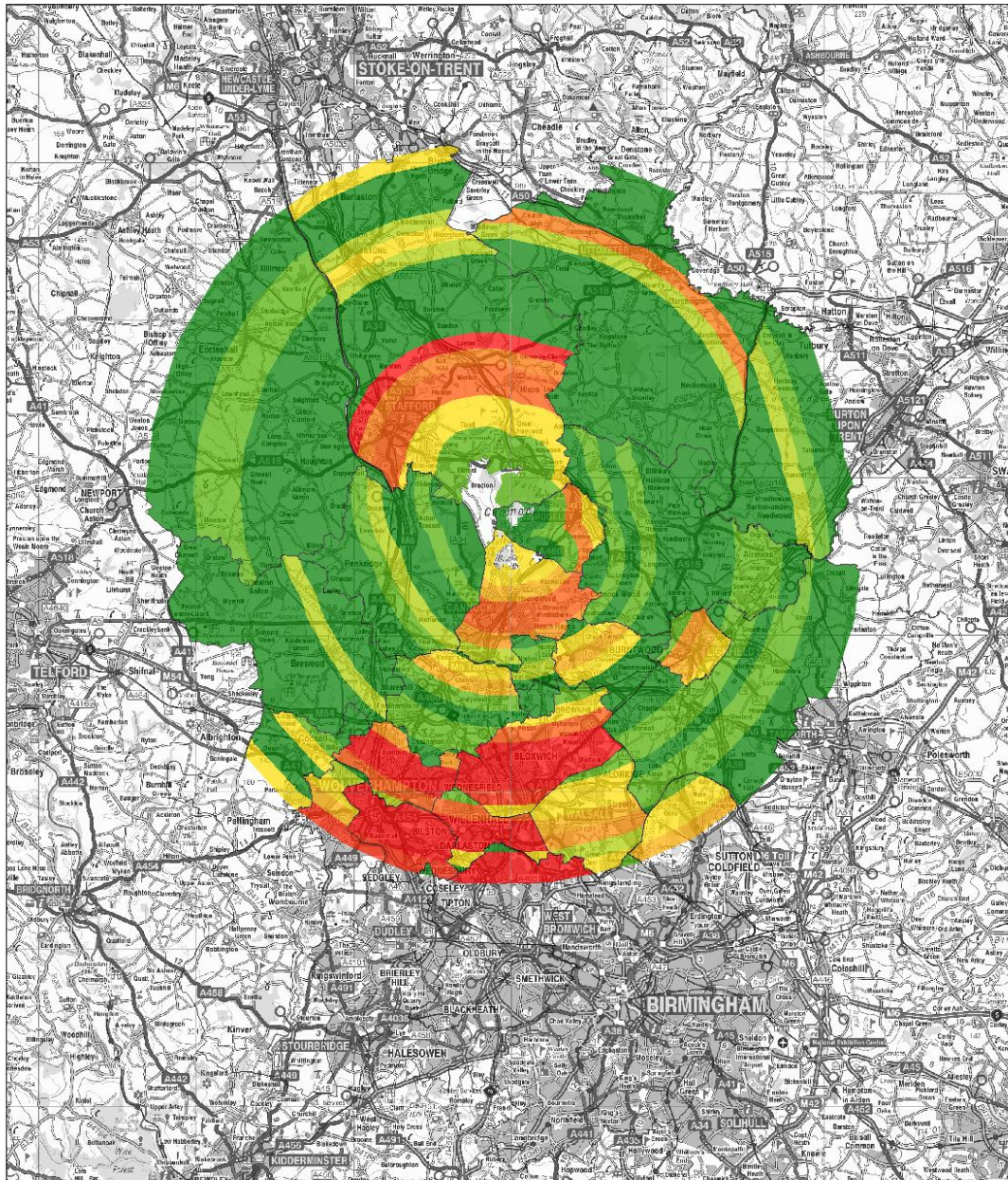
Contains Ordnance Survey Data.
©Crown copyright and database right 2011.

- Postcodes of those visiting every day
- Postcodes of those visiting every week
- ▭ Convex hull - closest 75 percent of those visiting daily or weekly
- ▭ SAC



Map 23: Current numbers of housing by sub area and distance band. 1km bands. Colours extend to 20km from SAC boundary.

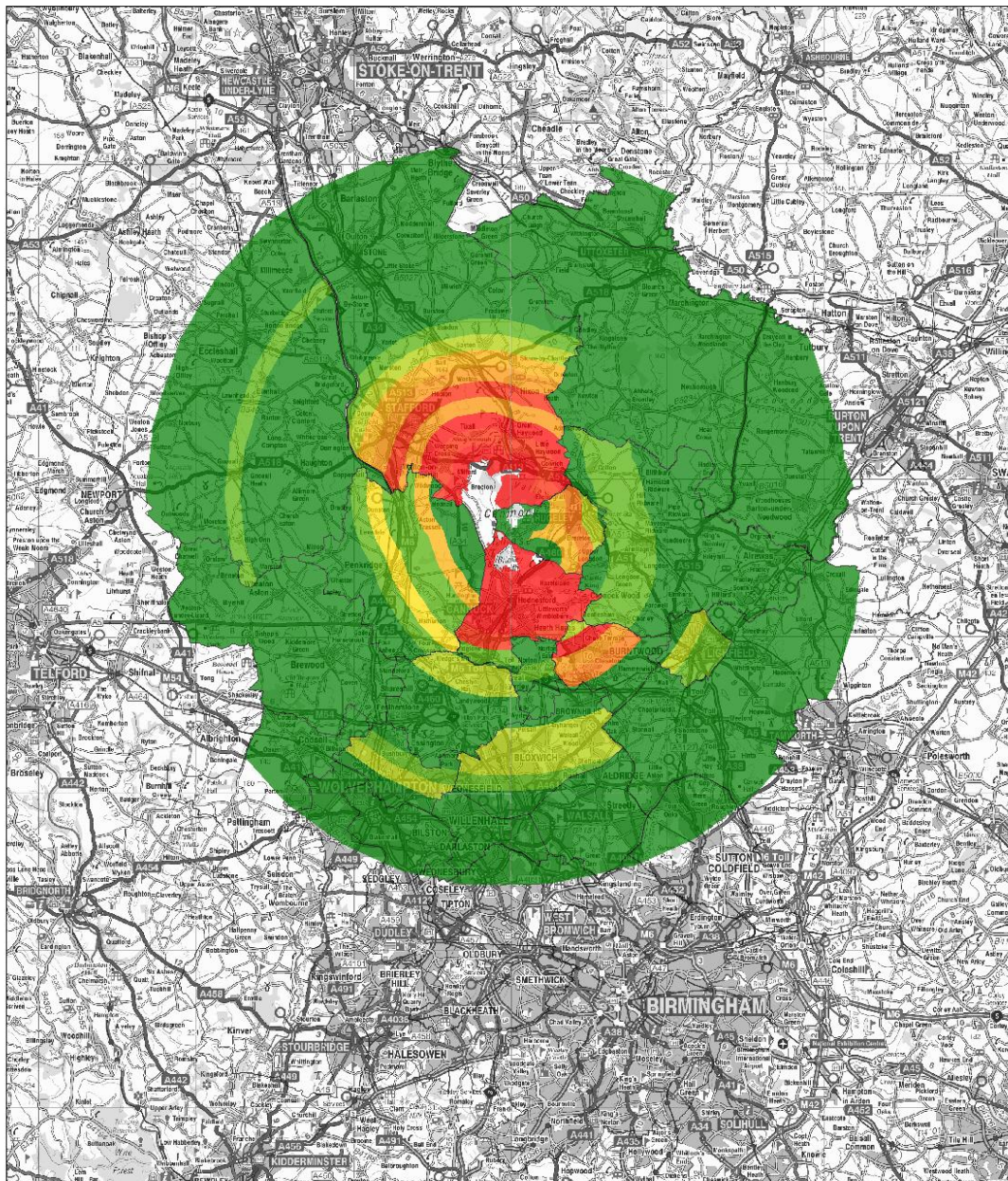
Contains Ordnance Survey Data.
©Crown copyright and database right 2011.



■ 9,000 to 18,000 (13)	■ 5,000 to 6,000 (4)	■ 1,000 to 2,000 (29)
■ 8,000 to 9,000 (3)	■ 4,000 to 5,000 (7)	■ 0 to 1,000 (137)
■ 7,000 to 8,000 (7)	■ 3,000 to 4,000 (21)	
■ 6,000 to 7,000 (3)	■ 2,000 to 3,000 (11)	

Map 24: New housing (current plus new) by subarea and distance band. 1km bands. Colours extend to 20km from SAC boundary.

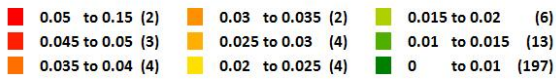
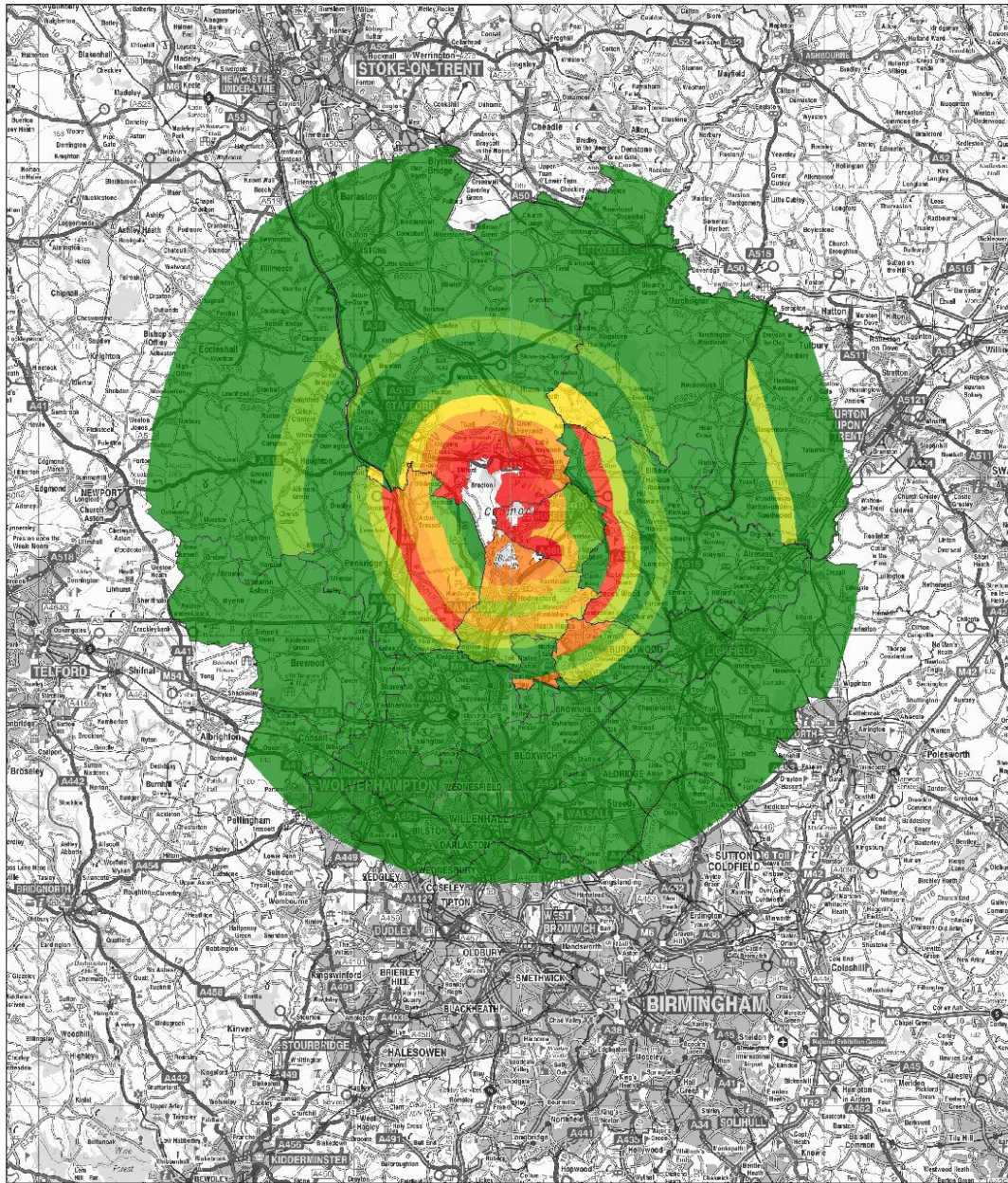
Contains Ordnance Survey Data.
©Crown copyright and database right 2011.



90 to 200 (7)	50 to 60 (3)	20 to 30 (10)
80 to 90 (3)	40 to 50 (3)	10 to 20 (14)
60 to 70 (2)	30 to 40 (1)	0 to 10 (192)

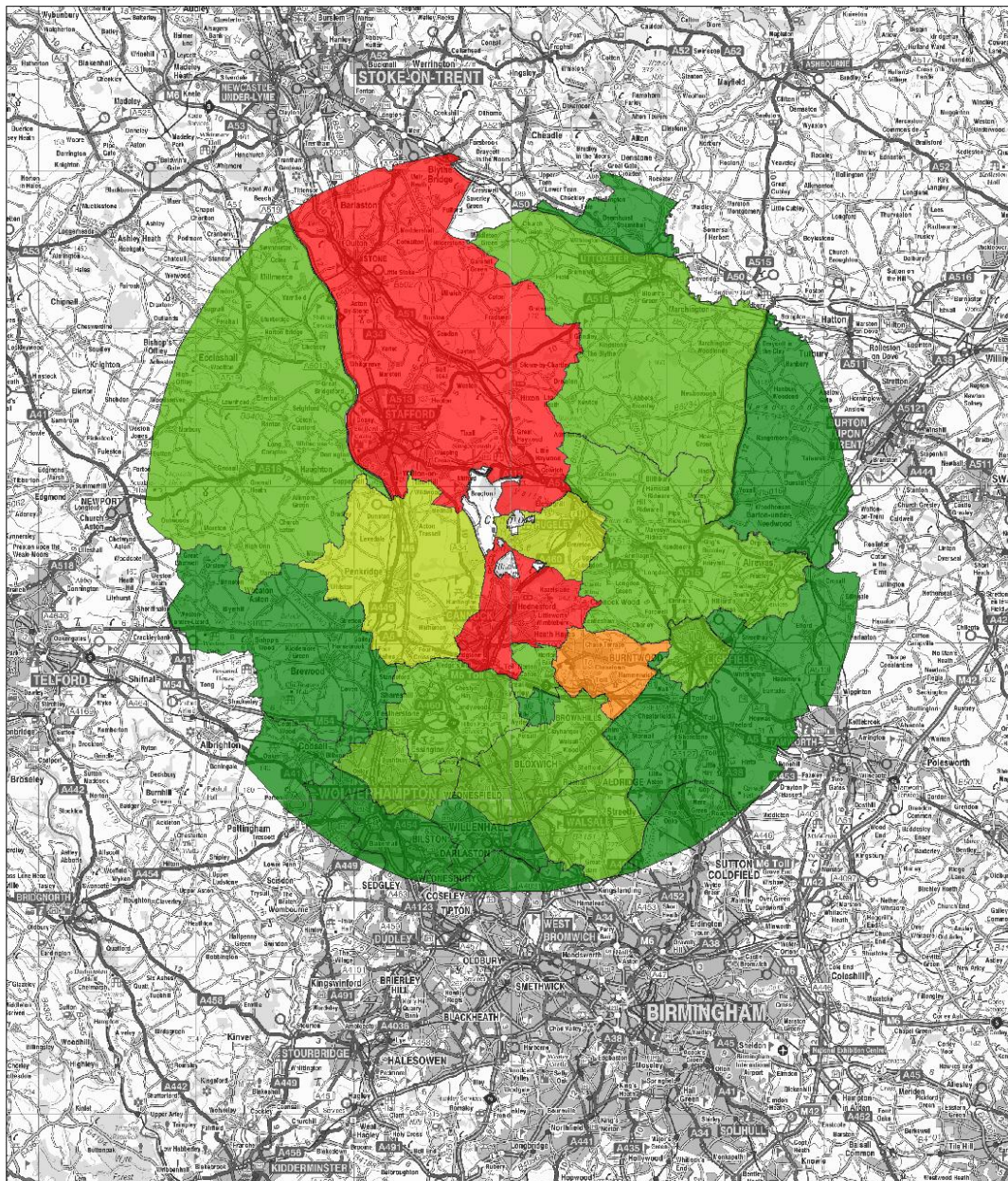
**Map 25: Number of interviewee postcodes (excluding Mountain Bikers)
Per 10km band from SAC and per subarea. Colours extend to 20km from SAC boundary.**

Contains Ordnance Survey Data.
©Crown copyright and database right 2011.



Map 26: Ratio of interview postcodes to number of houses.
Colours extend to 20km from SAC boundary.

Contains Ordnance Survey Data.
 ©Crown copyright and database right 2011.



- 15 to 26.4 (2)
- 10 to 15 (1)
- 5 to 10 (2)
- 1 to 5 (9)
- 0 to 1 (13)

Map 27: Percentage of visitor postcodes in the future, by subarea, within 20km radius.

Contains Ordnance Survey Data.
 ©Crown copyright and database right 2011.