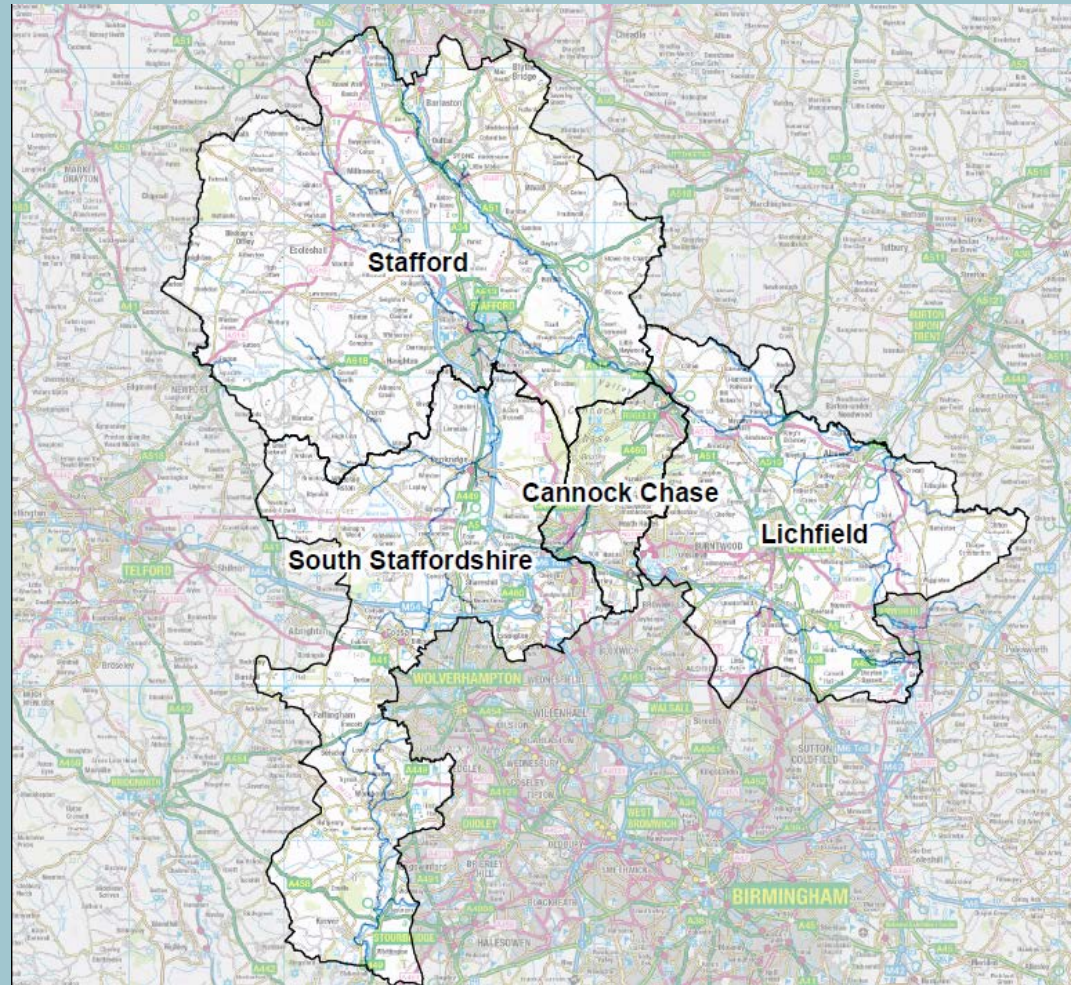


South Staffordshire, Cannock Chase,  
Lichfield & Stafford  
Strategic Flood Risk Assessment  
Volume 2 - Maps  
June 2014



## Quality Management

<b>Job No</b>	CS069598		
<b>Title</b>	South Staffordshire, Cannock Chase, Lichfield & Stafford Level 1 SFRA Update Volume 2 - Maps		
<b>Location</b>	South Staffordshire Council		
<b>Document Ref</b>	N/A	<b>Issue / Revision</b>	Final (Version 2)
<b>Date</b>	19 <sup>th</sup> June 2014		
<b>Prepared by</b>	Jane Tingay	Signature (for file)	<i>J Tingay</i>
<b>Checked by</b>	Louise Tattersall	Signature (for file)	<i>L Tattersall</i>
<b>Authorised by</b>	Steve Thompsett	Signature (for file)	

## Revision Status

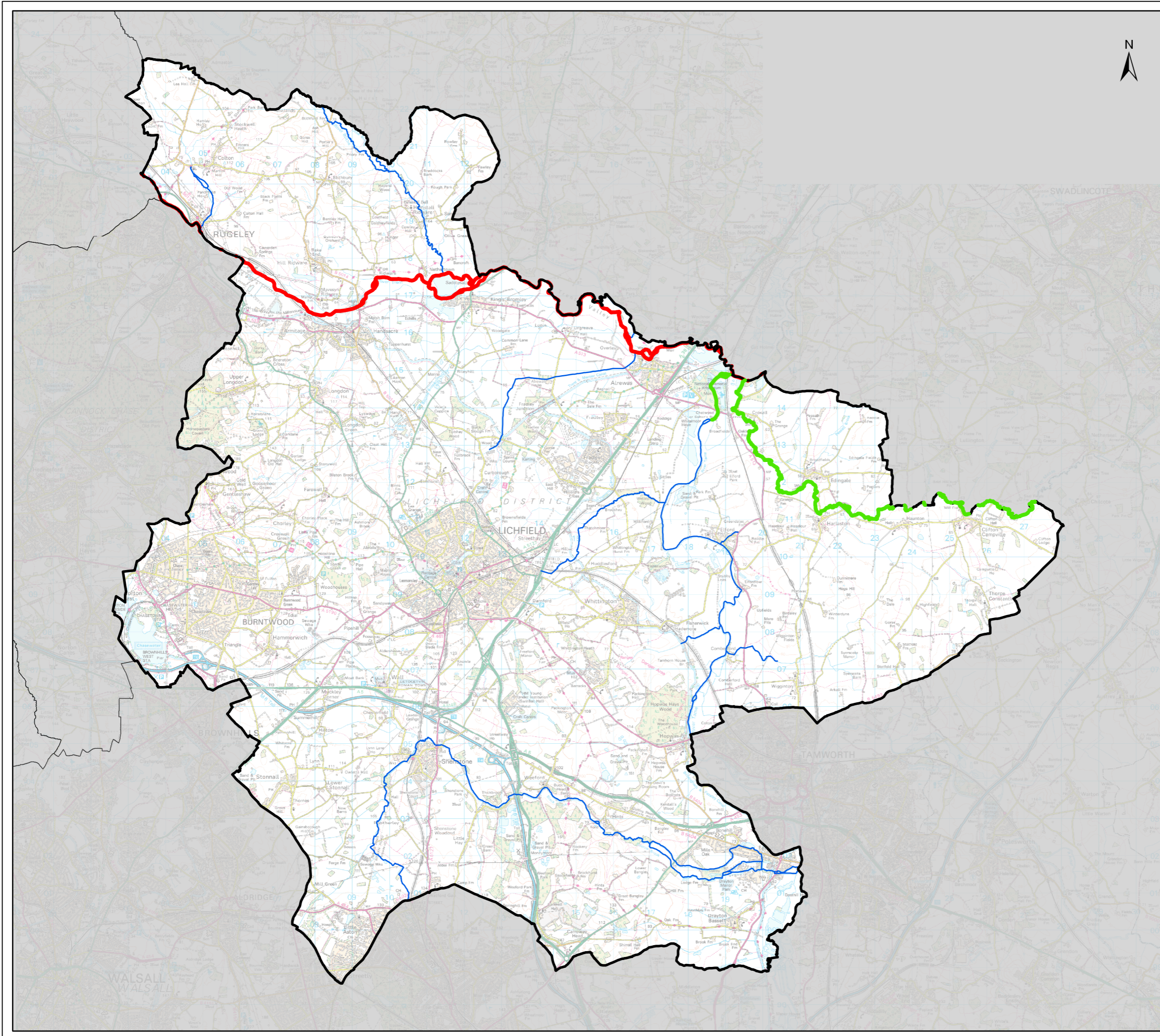
Rev	Date	Issue / Purpose/ Comment	Prepared	Checked	Authorised
Draft	28/02/2014	Issue draft for comment	JT	LT	ST
Final	30/04/2014	Final	JT	LT	ST
Final	19/06/2014	Final (Version 2)	JT	-	ST

This document and related appendices have been updated on behalf of South Staffordshire, Cannock Chase Council, Lichfield District Council & Stafford Borough Council by:

# CAPITA

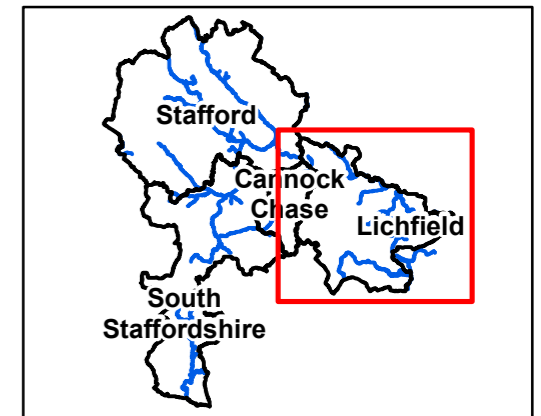
Quays Office Park, Conference Avenue, Portishead, BS20 7LZ.

Tel 01275 840 840 [www.capita.co.uk](http://www.capita.co.uk)



**Legend**

- Main Rivers
- Model Extents**
- River Trent, River Trent SFRM, 2009
- Measham and Packington Scenario Modelling and Mapping, 2012



**Notes**

Contains Ordnance Survey data © Crown copyright and database rights 2014 Ordnance Survey 100017765.  
 Note the property of this drawing and design is vested in Capita Property and Infrastructure Limited and must not be copied or reproduced in anyway without their written consent.



**South Staffordshire Strategic Flood Risk Assessment**

Figure M-LD  
 Modelled Watercourses  
 in Lichfield District Council

**Consultants**



DRAWN BY HT	CHECKED BY JT	PASSED BY JT	DATE 17/04/14	SCALE @ A3 1:100,000
DRAWING NUMBER CS069598_M_002			REV 2	ISSUING OFFICE Bristol